

# 2015 New York City **Middle School** Directory **DISTRICT 13**



It is the policy of the New York City Department of Education not to discriminate on the basis of race, color, religion, creed, ethnicity, national origin, alienage, citizenship status, age, disability, weight, marital status, gender (sex) or sexual orientation in its educational programs, activities, and employment policies, and to maintain an environment free of sexual harassment, as required by law. Inquiries regarding compliance with appropriate laws may be directed to: Director, Office of Equal Opportunity, 65 Court Street, Room 923, Brooklyn, New York 11201, Telephone 718-935-3320.

# Translations

Translated versions of this Directory will be available on our website in fall 2014 at [nyc.gov/schools/MiddleSchool](http://nyc.gov/schools/MiddleSchool).

ستتوفر نسخ مترجمة من الدليل على موقعنا الإلكتروني في خريف 2014.

এই ডিরেক্টরির অনূদিত সংস্করণ 2014 সালের শরত ঋতুতে অনলাইনে পাওয়া যাবে।

本指南的中文譯本截至2014年秋季將登載在以下網站上。

Des versions traduites de cet Annuaire seront disponibles sur notre site internet courant de l'automne 2014.

Tradiksyon Anyè sa a ap disponib an kreyòl sou sit wèb nou an pou otòn 2014 la.

본 안내서의 번역본은 2014년 겨울에 아래 웹사이트에 게재될 예정입니다.

Русский перевод справочника будет размещён на нашем вебсайте осенью 2014 г.

La versión traducida de este Directorio estará disponible en nuestra página web a partir del otoño del 2014.

اس ڈائریکٹری کی ترجمہ شدہ اشاعت ہماری ویب سائٹ پر موسم خزاں 2014 تک دستیاب ہوگی۔



# Table of Contents

## Part 1: Learn About Middle School Admissions

How Middle School Admissions Works.....	1
Admissions Priorities.....	2
Admissions Methods.....	2
The Types of Middle School Admissions Methods .....	3
Your Next Steps.....	4

## Part 2: Get More Information About Your Choices

Sample Directory Page.....	5
School Location and Transportation .....	6
Middle School Events.....	6
Other Middle School Options .....	6
School Quality Information .....	7
New York State Accountability.....	8

## Part 3: Students with Special Needs

Special Education Services .....	8
Site Accessibility Information.....	8
English Language Learners (ELLs).....	9

## Part 4: Learn How to Complete the Application

Sample Middle School Application .....	10
How to Complete the Application .....	11
Application Tips and Reminders .....	12
District-Specific Information .....	13

## Part 5: Maps

District 13 Map.....	14
Boroughwide and Citywide Maps .....	15

## District 13 School Pages

13K008 – Robert Fulton (P.S. / M.S. 8) .....	16
13K113 – Ronald Edmonds Learning Center (M.S. 113) .....	17
13K265 – Dr. Susan S. McKinney Secondary School of the Arts .....	18
13K266 – Park Place Community (M.S. 266).....	19
13K282 – Park Slope (P.S. / M.S. 282).....	20
13K301 – Satellite East Middle School.....	21
13K313 – Satellite West Middle School .....	22
13K351 – The Urban Assembly Unison School .....	23
13K492 – The Urban Assembly Academy of Arts & Letters .....	24
13K596 – PEACE Academy (M.S. 596).....	25
13K691 – Fort Greene Preparatory Academy .....	26

**Boroughwide School Pages**

13K527 – Urban Assembly Institute of Math and Science for Young Women (M.S. 527) ( <i>Located in District 13</i> ) .....	28
14K614 – The Young Women's Leadership School of Brooklyn ( <i>Located in District 14</i> ) .....	29
17K543 – Science, Technology and Research Early College School at Erasmus ( <i>Located in District 17</i> ) .....	30
17K590 – Medgar Evers College Preparatory School ( <i>Located in District 17</i> ) .....	31
18K235 – The Lenox School (P.S. 235) ( <i>Located in District 18</i> ) .....	32
20K609 – Urban Assembly School for Criminal Justice ( <i>Located in District 20</i> ) .....	33
21K228 – David A. Boody (I.S. 228) – Dual Language Programs Only ( <i>Located in District 21</i> ) .....	34
23K392 – I.S. 392 ( <i>Located in District 23</i> ) .....	35
23K518 – Knowledge and Power Preparatory Academy V ( <i>Located in District 23</i> ) .....	36
23K522 – Mott Hall IV ( <i>Located in District 23</i> ) .....	37
23K644 – Eagle Academy for Young Men II ( <i>Located in District 23</i> ) .....	38
23K697 – Teachers Preparatory Secondary School ( <i>Located in District 23</i> ) .....	39
32K383 – Philippa Schuyler (J.H.S. 383) ( <i>Located in District 32</i> ) .....	40

**Citywide School Pages**

01M539 – New Explorations into Science, Technology and Math School (NEST+m) ( <i>Located in District 1</i> ) .....	42
02M407 – Institute for Collaborative Education (I.C.E.) ( <i>Located in District 2</i> ) .....	43
02M408 – Professional Performing Arts School ( <i>Located in District 2</i> ) .....	44
02M442 – Ballet Tech / NYC Public School for Dance ( <i>Located in District 2</i> ) .....	45
03M334 – The Anderson School (P.S. 334) ( <i>Located in District 3</i> ) .....	46
03M859 – Special Music School ( <i>Located in District 3</i> ) .....	47
04M012 – Talented and Gifted (TAG) School for Young Scholars ( <i>Located in District 4</i> ) .....	48
20K686 – Brooklyn School of Inquiry ( <i>Located in District 20</i> ) .....	49
21K239 – Mark Twain for the Gifted & Talented (I.S. 239) ( <i>Located in District 21</i> ) .....	50
30Q300 – 30th Avenue School ( <i>Located in District 30</i> ) .....	51

<b>Appendix:</b> How to Apply to Mark Twain for the Gifted & Talented (21K239) and Professional Performing Arts School (02M408) .....	52
---	----

<b>Appendix:</b> District 13 Charter Schools .....	53
--	----

# Welcome to Middle School Admissions!

Middle school is a new and exciting time for children and families. Residents of New York City are able to apply to a wide array of middle school options that offer children a rich variety of opportunities to explore their interests. It is our hope that this directory will help you find a school that suits your child's needs, interests, and aspirations during this exciting and important time.

This directory contains information about all public middle schools that are open to students and residents in this district. This introduction will guide you through the middle school application process, from learning about schools to submitting your application.

## How Middle School Admissions Works

In order to participate in the Middle School Admissions process, you must submit a middle school application by the fall deadline. The application will be customized for your child and will include all of the middle school programs for which your child is eligible. On the application, you will rank all the middle schools your child is interested in attending, in order of preference.

Your child will then be matched to his/her highest possible program choice based on the following:

- **Admissions Priorities:** The order in which applicants are considered for placement. See page 2 for more information.
- **Admissions Methods:** The way schools consider and admit applicants. See page 2 for more information.
- **Seat Availability:** The number of seats offered at each program.

Most students will be offered admission to one of the programs ranked on their middle school application. If your child does not receive an offer to attend one of the schools ranked on his or her application, she/he will receive a placement in either (i) the district where she/he attends public elementary school; or, when different, (ii) the district to which she/he is zoned to attend middle school. For more information on how to fill out your child's application, see page 11.

**Eligibility:** Students residing in New York City who have met promotional standards from elementary school are assured a placement in a New York City public middle school. All students are eligible for admission to middle school in the district where they are zoned to attend middle school and, when different, in the district where they attend a New York City public elementary school.

### School-Based Admissions

Some middle schools listed in this Directory conduct a school-based application process. These schools do not participate in Middle School Admissions and will not be listed on your child's middle school application. Schools with their own application processes will not have any program information listed on their Directory pages. Please contact these schools directly for more information about how to apply.

### Boroughwide Middle Schools

This Directory also includes middle schools open to all students and residents of the borough. Boroughwide middle schools are listed in this Directory starting with the boroughwide section title page (page 27) and are marked with "Boroughwide School" in the top-right corner of the school pages.

### Citywide Middle Schools

Citywide middle schools are open to all students and residents of New York City. Citywide middle schools are listed in this Directory starting with the citywide section title page (page 41) and are marked with "Citywide School" in the top-right corner of the school pages.

## Admissions Priorities

Admissions Priorities determine the order in which applicants are considered for placement in a middle school program. If a program has multiple Admissions Priorities, students who fall into the first priority group will be considered for placement first; students in the second priority group will be considered next; and so on, until all available seats have been filled. Students who fall into higher priority groups have a better chance of getting into a particular program than students who fall into lower priority groups. Schools with multiple middle school programs may have different Admissions Priorities for those programs, so be sure to carefully review the “Admissions Priorities and Programs” section on school pages.

### Example: How Admissions Priorities Work

John and Andrea both want to apply to New York Middle School, a school with grades 6-8 in District 13. New York Middle School’s Admissions Priorities are:

- Priority to students residing in the zone
- Then to students and residents in District 13

John lives in the zone of New York Middle School, but Andrea does not. Due to the Admissions Priorities, **John has a better chance of being matched to New York Middle School than Andrea does.** Despite the fact that Andrea lives in District 13, she falls into the second priority group – all students residing in the zone who apply will be considered *before* her.

How John and Andrea rank the school on their applications is also important. If John ranks the school third, he may very likely get his first or second choice. And if Andrea ranks the school first, she may receive a match even though she does not have priority. This is because students with priority, like John, have matched to other programs that they ranked higher on their applications.

## Admissions Methods

Admissions Methods are the ways in which middle school applicants are admitted into programs. The six types of Admissions Methods are explained in more detail below (in alphabetical order):

**Limited Unscreened:** Limited Unscreened programs give priority to students who demonstrate interest in the school by attending an information session, school tour, open house event, or by visiting the school’s exhibit at the Middle School Fair. **You must sign in at these events to receive priority to the school’s Limited Unscreened program(s).** Individual schools maintain lists of families who sign in at these events. Students who receive priority to Limited Unscreened programs are not guaranteed admission.

**Screened:** In Screened programs, students are ranked by the school based on a variety of factors which may include final report card grades from the prior school year, reading and math standardized test scores, and attendance and punctuality. Some Screened programs have additional requirements like an interview, audition, writing sample, diagnostic test, and/or teacher recommendation. We refer to these factors as Selection Criteria. Review the Selection Criteria for all Screened programs of interest so that you know how your child will be assessed. If you have any questions, please contact the individual schools for more information. Please note that, consistent with New York State law, State ELA and Mathematics test results will not be the sole, primary or major factor in admissions decisions. Instead, multiple measures, which may include State test results, will be used to make admissions decisions for Screened programs.

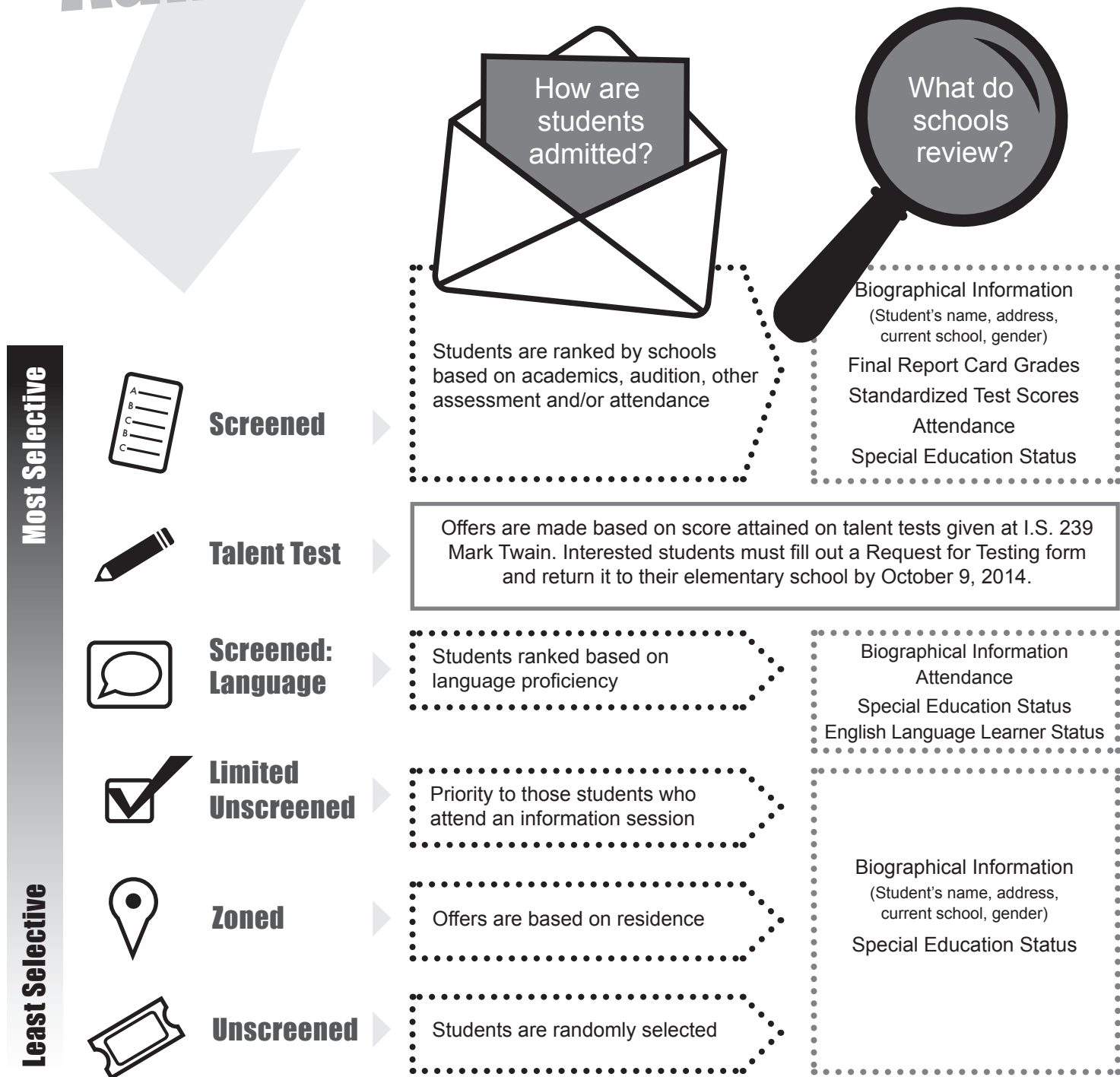
**Screened: Language:** Screened: Language programs include Bilingual, Dual Language, and English as a Second Language models. Interested students should review the program name to ensure they are applying to a program that matches their home/native language. Depending on the English Language Learner (ELL) program model being implemented, priority may be given to ELLs, participants of elementary school-level Dual Language and Transitional Bilingual Education programs in the target language, and/or heritage speakers of the target language.

**Talent Test:** Talent Test programs base admission on a student’s exam performance in specified talent areas. Talent Test programs are found at several District 21 schools, including I.S. 239 Mark Twain, which is open to all NYC residents. Testing details are listed on Talent Test schools’ Directory pages.

**Unscreened:** In Unscreened programs, students who apply are randomly selected. If there are priority groups within an Unscreened program, students will be selected randomly within those groups.

**Zoned:** Zoned programs are open to students who live in the geographic zoned area of the middle school. Some geographic zones are shared between middle schools, giving students more than one zoned school option. To find out if your child is zoned to one or more middle schools, please contact your school’s middle school liaison.

# The Types of Middle School Admissions Methods



# Your Next Steps

## September

- ☐ Review the Middle School Directory
- ☐ Meet with your guidance counselor to discuss middle school options and the Request for Testing (RFT)
- ☐ Contact schools of interest about open houses, information sessions, and audition dates
- ☐ Check the middle school website for important dates: [nyc.gov/schools/middleschool](https://nyc.gov/schools/middleschool)
- ☐ Attend the District Middle School Fairs

## October

- ☐ Attend the District Middle School Fairs
- ☐ Return RFT to your guidance counselor
- ☐ Attend information sessions and open houses
- ☐ Review Admissions Priorities for each school

## November

- ☐ Receive middle school application
- ☐ Check your commute for schools of interest
- ☐ Get your application ready:
  - Rank the choices you are interested in attending
  - Sign and make a copy of the application

## December

- ☐ Submit your completed application to your guidance counselor

## January

- ☐ Attend auditions and interviews; complete school-based assessments and/or portfolios

## February

- ☐ Attend auditions and interviews; complete school-based assessments and/or portfolios

## March

- ☐ Receive and return New Middle Schools application to guidance counselor (optional)

## May

- ☐ Middle school match results distributed
- ☐ Students who participated in the new schools round and received two matches return notification letter to guidance counselor with choice of which match to accept
- ☐ Students who wish to appeal must also return notification letter to their school, then return completed appeal application

## June

- ☐ Middle school appeal results distributed



## Contact Information

**Address:** 123 City Lane

**Phone:** 212-555-5555

**Fax:** 212-555-5556

**Email:** NYMS@schools.nyc.gov

**Website:** nyc.gov/schools/schoolportals/01/a123

**Subway:** W to 34th Ave, 8 to Ave B

**Bus:** M44Q, M24N, M81, M3, M7, M92

## Supports for ELL and Students with Disabilities

**Site Accessibility:** Not Accessible

**Special Education Services:** This school will provide students with disabilities the supports and services indicated on

**ELL Programs:** Total number of students who were enrolled in grades 6-8 as of November 2013.

## School Life

**Total Students (grades 6-8):** 152

**Grades (2015-2016):** PK-8

**Uniform/Dress Code Enforced:** No

**Academic Portfolio Required:** No

**Community Service Required:** Yes

**Extended Day Program Offered:** Yes

**Summer Session Offered:** No

**Weekend Program Offered:** Yes

This section will list all admissions information for schools that are part of Middle School Admissions. Schools with a school-based application process will not have any information listed here.

The Cooperative, Healthy, Active, Motivated, and Positive Students (CHAMPS) Middle School Sport and Fitness League is an initiative of the New York City Department of Education that promotes physical activity among children going through the critical years of middle school.

## School Performance

Boroughwide and Citywide schools are indicated here. For more information about these types of schools, see page 1.

Citywide School

	What % of Middle School Students...						How Satisfied Are Students With the School?
	Passed English Class?	Passed Math Class?	Passed Social Studies Class?	Passed Science Class?	Were Proficient on the State English Test?	Were Proficient on the State Math Test?	
This School's Performance in 2012-2013	82%	81%	86%	87%	11%	28%	7.5
Average for Similar Schools	84%	81%	83%	84%	11%	10%	7.5

**Quality Review Score:** Well Developed (2010-2011)

## About Our School

New York Middle School prepares students for high school, college, and beyond. Students are given the opportunity to choose from a variety of special programs to further develop their academic interests, and a wide variety of extracurricular activities are available. We view parents as our partners in helping to support our students, and have an open-door policy to promote good communication between our students, families, and staff.

## Academic Opportunities

**Regents Classes:** Living Environment

**Language Classes:** Spanish

aphy, School Newspaper, Student Arts, Music (Jazz Band, Rock Band, Symphony), Project BOOST (Building Options and Opportunities for Students)

**CHAMPS Sports – Boys:** Basketball, Softball

**CHAMPS Sports – Girls:** Basketball, Softball, Volleyball

**CHAMPS Sports – Co-ed:** Basketball, Soccer, Track & Field

## Admissions Priorities and Programs

### Admissions Priorities

Admissions Priorities determine the order in which applicants are considered for placement. For more information, see page 2.

- Priority to continuing 5th graders
- Then to students residing in the zone
- Then to students and residents of District

Number of seats that were available to students applying for September 2014.

Program Name	Admissions Method	2014 Seats	2014 Applicants
New York Middle School	Limited Unscreened	70	176
<b>Selection Criteria:</b> Priority is given to students who demonstrate interest by signing in at one of the following events: Information Session, School Tour, Open House, or Middle School Fair.			
Honors Academy	Teacher Readiness		
<b>Selection Criteria:</b> <ul style="list-style-type: none"> <li>• Essay/Writing Sample</li> <li>• Review of Grades</li> <li>• Student Interview</li> <li>• Teacher Recommendation</li> </ul>			

Admissions Methods determine the specific ways in which middle school applicants are admitted into middle school. For more information, see page 2.

Total number of students who applied for September 2014 admission.

Some middle schools have more than one program; each program will be listed separately on the middle school application.

Selection Criteria includes admissions requirements that students must complete in order to apply to a specific program and other information explaining how students are admitted.

## School Location and Transportation

It is extremely important to consider where schools are located in relation to your home. This Directory includes a map indicating the location of all the middle schools in this district on page 14. The map includes all types of middle schools in the district, including charter schools and schools that require a school-based application, if applicable. There are also maps showing the location of the boroughwide and citywide options available to your child on page 15. Please research the travel options available to your child for schools of interest, particularly the train and bus routes that would be necessary.

A summary of pupil transportation information is below. Transportation offered by charter schools varies by school. The New York City Department of Education offers transportation to middle school students based on these criteria:

**Students in Sixth Grade** are provided with free transportation if they live one mile or more from school; if they live closer than that but more than  $\frac{1}{2}$  mile from school, a half-fare MTA bus pass is available on request from their school. Free transportation is provided as either a yellow bus or a MetroCard. Students receive yellow busing if (i) their school has bus service, (ii) they live in the same school district as their school, and (iii) a bus can pick them up, along with 10 other students, on a route of no more than 5 miles.

**Students in Seventh Grade and above** are provided with MetroCards if they live  $1\frac{1}{2}$  miles or more from school. If they live closer than that but more than  $\frac{1}{2}$  mile from school, a half-fare MTA bus pass is available on request from their school.

For more information about student transportation, call the Office of Pupil Transportation at (718) 392-8855 or visit [nyc.gov/schools/offices/transportation](http://nyc.gov/schools/offices/transportation).

## Middle School Events

This fall, you will have multiple opportunities to learn more about the middle schools in your district.

**Middle School Fairs:** In September or October, there will be a middle school fair for your district. At the fair, you will be able to meet school representatives and ask questions about specific programs and offerings. Information about your middle school fair will be available from your elementary school and online at [nyc.gov/schools/middleschool](http://nyc.gov/schools/middleschool) this fall.

**School Open Houses:** Many middle schools offer open house/school tour events where you and your child can see the school facilities, meet staff members, and ask questions. Before you visit, prepare a list of questions for school representatives regarding the school's culture, course offerings, and extracurricular activities. For information about school open houses and/or school tours, please contact middle schools of interest directly.

**Priority to Limited Unscreened Programs:** As noted on page 2, Limited Unscreened programs give priority to students who sign in at an information session, school tour, open house event, or by visiting the school's exhibit at the Middle School Fair. If you are interested in a Limited Unscreened program, please make sure to sign at an event to receive priority for admission.

## Other Middle School Options: Charter Schools

Charter schools are independent public schools run by not-for-profit Boards of Trustees that operate under a five-year contract or "charter." Many charter schools have unique educational approaches that may include longer school days, a longer school year, and/or thematic curriculum programs. Any student eligible for admission to a traditional public school is eligible for admission to a public charter school.

If the number of applicants exceeds the number of available seats at a charter school, the charter school must conduct a lottery to determine admissions. The New York State Charter Law allows schools to offer a lottery preference to three groups: (i) siblings of students who already attend the school, (ii) students who reside in the charter school's district of location, and (iii) students at risk of academic failure. Charter schools can define which students are considered to be at risk of academic failure. Definitions may include, but are not limited to: students eligible for Free or Reduced Lunch, students who are English Language Learners, or Students with Disabilities. Interested students or parents must contact each charter school directly to receive an application and follow the procedures for admission.

For a list of charter schools in this district that serve sixth grade in the 2015-2016 school year, see the last page of this book. Please note that only some of these schools will have seat availability for incoming sixth graders. For the most up-to-date admissions information, please contact the schools directly.

For more information about charter schools in New York City, see the Directory of New York City Charter Schools, available at enrollment offices (see inside back cover) and online at [nyc.gov/schools/charters](http://nyc.gov/schools/charters), or call (212) 374-5419. For information about particular charter schools, please contact the schools directly.

## School Quality Information

The New York City Department of Education collects information about school practices and student outcomes, which can help identify each school's strengths and areas for improvement. This Directory contains some of this information, which is listed on school pages and explained in more detail below. If you have any questions about this section, please speak to your school's guidance counselor or visit [nyc.gov/schools/accountability](http://nyc.gov/schools/accountability). All citywide and district averages below are for the 2012-2013 school year.

The percent of students who passed courses in the core subjects: English, math, social studies, and science.

Citywide Average	District 13 Average
English: 89%	English: 84%
Math: 88%	Math: 80%
Social Studies: 89%	Social Studies: 85%
Science: 90%	Science: 83%

The percent of 6<sup>th</sup>, 7<sup>th</sup>, and 8<sup>th</sup> grade students who scored at a level 3 or 4 on the New York State English and math tests.

Citywide Average	District 13 Average
English: 25%	English: 18%
Math: 27%	Math: 12%

A summary of student satisfaction with the school based on results from the annual School Survey. Survey questions focus on academic expectations, communication, engagement, safety, and respect.

Citywide Average	District 13 Average
7.4	7.5

### Sample Sample School Performance

	What % of Middle School Students...						How Satisfied Are Students With the School?
	Passed English Class?	Passed Math Class?	Passed Social Studies Class?	Passed Science Class?	Were Proficient on the State English Test?	Were Proficient on the State Math Test?	
This School's Performance in 2012-2013	93%	95%	89%	91%	35%	37%	7.4
Average for Similar Schools	89%	91%	91%	88%	35%	34%	7.6

Quality Review Score: Well Developed (2010-2011)

This rating reflects how well a school's practices support student learning, and the year of the school's most recent review.

This row shows 2012-2013 performance of schools with similar student populations, based on entering characteristics and achievement.

The performance of similar schools is an important comparison for understanding how well a school is succeeding with its students relative to other schools with similar students.

Note: Schools with incomplete course data are listed as N/A.

## School Quality Information, continued

### Quality Review

The Quality Review evaluates how well a school is organized to improve student achievement. During the two to three day review, evaluators visit classrooms, talk with school leaders, parents and students, and use a detailed rubric to make an overall assessment. The process seeks to look beyond a school's performance statistics to ensure that the school is engaged in work that strengthens the relationship between students, teachers, and content. The results of the review are published online in a detailed report describing what the school does well and where the school can improve.

**At the end of the Quality Review, the school receives one of the following overall scores:**

- Outstanding (*For 2007-2008 reports only*)
- Well Developed
- Proficient
- Developing
- Underdeveloped

The Quality Review score can be found just below the School Performance table (see sample on previous page). The Quality Review score listed on the school pages reflects the most recent year that a Quality Review was conducted at that particular school. For the most up-to-date Quality Review scores and reports, please visit [nyc.gov/schools/Accountability/tools/review/find](http://nyc.gov/schools/Accountability/tools/review/find).

## New York State Accountability

The New York State Education Department (NYSED) determines the accountability status of schools based on its own set of measures. For more information about New York State Accountability, visit the NYSED website: [www.p12.nysed.gov/accountability](http://www.p12.nysed.gov/accountability).

## Special Education Services

Students with disabilities may apply to all schools and/or programs listed in this Directory, subject to the same admissions requirements as their general education peers. If the student's IEP contains testing accommodations, those accommodations will be provided when the student tests or auditions.

Students whose IEPs recommend a specialized District 75 program and who wish to continue in a District 75 program are not required to participate in the middle school admissions process. These students are notified of their middle school placement in May or June by their District 75 schools. If you and the IEP team are considering a recommendation to a community school at the next IEP meeting, we encourage you to participate in the middle school admissions process.

For more information, visit [nyc.gov/schools/Academics/SpecialEducation](http://nyc.gov/schools/Academics/SpecialEducation).

## Site Accessibility Information

The DOE is committed to ensuring that its programs, services, and activities are accessible to students with disabilities, including students with mobility impairments or other physical disabilities, in compliance with the Americans with Disabilities Act (ADA). The DOE assesses all organizations located in our buildings on a continuous basis to determine which schools are functionally accessible to students with disabilities.

**Functionally Accessible Schools or Programs** are located in a fully or partially accessible building where an individual with mobility impairment may enter and access all relevant programs and services, including the science laboratory, library, cafeteria, and the gymnasium; in some cases school programs may need to be re-located to accommodate access. At least one restroom is accessible.

For general inquiries about accessibility, please contact the Office of Space Planning at [SpacePlanning@schools.nyc.gov](mailto:SpacePlanning@schools.nyc.gov). For the most up to date information on the accessibility of each school please contact the school directly.

# English Language Learners (ELLs)

There are three types of programs designed to serve English Language Learners (ELLs) in New York City public schools. ELLs receive a range of supports and services to develop their English proficiency and prepare them for success in school, college, and/or careers.

There are three different ELL service delivery models offered in New York City public schools:

**Dual Language (DL):** Dual Language programs provide instruction in two languages. The goal of the DL model is to develop bilingualism. Students become proficient in reading, writing, and speaking in English and in the target language of the program (e.g., Spanish, Chinese). The DL model used by the school is based on student demographics in the school and district; however, ELLs receive priority enrollment in DL programs. The amount of instructional time dedicated to each language can vary by model and school (e.g., 60% English/40% Spanish; 50% English/50% Spanish). ELLs enrolled in DL programs receive English as a Second Language (ESL) instruction as a part of their academic schedule.

**English as a Second Language (ESL):** English as a Second Language programs are offered in all New York City public schools and are taught in English. The goal of ESL is for students to develop English proficiency. ESL programs may vary; some schools may offer stand-alone ESL classes while others may incorporate ESL instruction embedded in subject area classes (e.g., Science).

**Transitional Bilingual Education (TBE):** Transitional Bilingual Education programs provide instruction in English and students' native languages. The goal of the TBE model is for students to develop English proficiency, by gradually reducing the amount of instruction in their native language. Schools provide English Language Arts (ELA), Native Language Arts (NLA), and subject area classes in students' native languages and in English. As students develop English proficiency, time spent learning in English increases and native language instruction decreases (e.g., Year 1: 60% Spanish/40% English; Year 2: 50% Spanish/50% English).

## ELL Information in This Directory

This Directory indicates which of the ELL service delivery models above are *currently* offered in each middle school, based on school-reported data.

All middle schools must issue the **ELL Parent Survey and Program Selection Form** at the parent orientation meeting which is offered to all newly-identified ELLs. If you do not receive this form, please request it from the school. You may use the form to indicate your preferred ELL service delivery model, even if your middle school does not currently offer it. Middle schools will be identified for a dual language or transitional Bilingual Education program when there are 20 or more ELLs with the same native language in any single grade whose parents/guardians request either Dual Language or Transitional Bilingual Education. In this way, parents can determine which ELL service delivery models are offered in their child's school.

For the most up-to-date information regarding ELL service delivery models, please contact schools directly. For more information about services and supports for English Language Learners (ELLs), please call 212-374-6072 or visit the Office of English Language Learners website: [nyc.gov/schools/Academics/ELL](http://nyc.gov/schools/Academics/ELL).

**1 STUDENT INFORMATION**

Parent/Student: Please review the information below carefully. Contact personnel at your current school to update information on this page.

Student Name	Student ID #	Date of Birth	Gender
Home Address	Apt.#	Borough	Zip Code
Local Zoned Middle School			
Parent/Guardian Name	Telephone		

**2 ACADEMIC INFORMATION**

Parent/Student: Please review the information below carefully. Contact personnel at your current school to update information on this page.

Current Grade	Official Class	Current School
Standardized Tests:		
ELA:		
Test Date:	Score:	Level:
MATH:		
Test Date:	Score:	Level:
Entitled to Special Education Services:		
Entitled to Bilingual/ESL Services:		
NYSESLAT Test Date:	Level:	
Years in English Language School:	English Language	

**3 ACADEMIC ASSESSMENT – FOR STUDENTS ENROLLING IN SEMS**

**Middle School Liaison:** This section must be completed by school personnel for entry into SEMS.

- 1) Please verify that the student biographical information (e.g. address) and the student attendance are updated in ATS.
- 2) The final June 2014 report card grades and teacher comments must be entered directly into SEMS.

Attendance in ATS:	Days Absent:	Days Late:
Extenuating circumstances for absence are: <input type="checkbox"/> Yes <input type="checkbox"/> No		
If Yes, please check all that apply: <input type="checkbox"/> Due to Illness <input type="checkbox"/> Due to Family Circumstances <input type="checkbox"/> Lateness Excused		

**FINAL JUNE 2014 REPORT CARD GRADES**

Course Name	Grade
Math	
English Language Arts	
Social Studies	
Science	
Cluster	
Cluster	

**TEACHER COMMENTS**

Name of Teacher: \_\_\_\_\_

**Academic Assessment** (select one):  
☐ Above Average ☐ Average ☐ Small Group/Extended Day Support

Student's Performance: Enter 1–5 for each of the following areas, where "1" indicates an area needing improvement, and "5" indicates an area of strength. (Do not enter fractional values.)

Work Habits: \_\_\_\_\_ Study Habits: \_\_\_\_\_ Class Participation: \_\_\_\_\_

Homework: \_\_\_\_\_ Behavior: \_\_\_\_\_ Academic Performance: \_\_\_\_\_

**4 MIDDLE SCHOOL LIAISON NAME & SIGNATURE**

I certify that I have reviewed the information on this application and believe it to be accurately and correctly completed.

Middle School Liaison Name (please print)

Middle School Liaison Signature

Date

## How to Complete the Application

All New York City public elementary school fifth graders will receive a personalized application from their current school in November. This application will contain pre-populated information about the student and will list all of the middle schools for which that student is eligible.

To complete your child's middle school application, you will need to review sections 1 and 2, fill out section 5, and sign and date the application in section 6. Return the completed application to your child's middle school liaison by the deadline later this fall.

Here is a breakdown of each section:

**Section 1 – Student Information:** Student information printed here comes directly from your child's current school. Make sure to verify that this information is correct. If any information needs to be updated, please contact your elementary school.


**Section 2 – Academic Information:** The academic information printed in this section (including your child's most recent standardized test scores, special needs information, and last year's attendance record) comes from your child's current school. Make sure to verify that this information is correct. If any information needs to be updated, please contact your elementary school.

**Section 3 – Academic Assessment: For School Use Only:** This section will be filled out by a teacher or school administrator after you submit your child's application. **You do not need to complete this section.**

**Section 4 – Middle School Liaison Name & Signature:** This section will be filled out by the middle school liaison at your child's elementary school. **You do not need to complete this section.**

**Section 5 – Middle School Options:** This section will list the middle schools for which your child is eligible. On this part of the application, you will indicate which schools/programs you are interested in having your child attend, in order of preference.

Write a "1" next to the school you want your child to attend most; a "2" next to your second choice, and so on until you have ranked all of the schools for which your child is eligible and interested in attending. Make sure to look over the Tips and Reminders on the following page before you submit your child's application.

 Rank your choices in order of preference here.

Choice Number	District	Program Code	School Name/Program Name
2	1	M378L	School for Global Leaders
3	21	K239CM	Mark Twain (I.S. 239) Magnet Program - Computer/Math
1	21	K239VO	Mark Twain (I.S. 239) Magnet Program - Vocal
	1	M292S	Henry Street School for International Studies
4	1	M140S	The Nathan Straus Preparatory School of Humanities (P.S. 140)
	1	M301S	Technology, Arts, and Sciences Studio

**Section 6 – Parent/Guardian Name & Signature:** Applications must be signed and dated here.

## Application Tips and Reminders

You should discuss your middle school selections with your child and your child's middle school liaison before filling out the application. As you are ranking schools on your child's middle school application, don't forget these tips and reminders:

- Your child's middle school application has all of his/her options from within the middle school application process printed on it already. Do not write in programs; they will not be considered. If you are interested in any charter, private/parochial, or school-based application schools, please contact those schools directly.
- You can rank as many programs as you would like, but you do not need to rank all of them. Rank only programs you want your child to attend.
- Your child is **not** guaranteed a spot at the schools you rank on the application. If your child does not receive an offer at one of your ranked schools, your child will receive a placement in either the district of his/her current elementary school or the district to which your child is zoned to attend middle school.
- Remember, your child may also apply to middle schools with school-based applications and charter schools. These schools run their own admissions processes and will not be listed on your child's middle school application; contact these schools directly for more information.

### Continuing Fifth Grade Students

Fifth grade students currently attending a school that continues beyond fifth grade (such as a K-8 or K-12 school) have priority to continue on to sixth grade at that school. In order to receive this Admissions Priority, you must rank your child's current school as one of your choices on the middle school application.

You do not need to rank your child's current continuing school as your first choice in order to receive the priority, but be sure to include it in your ranked programs according to your actual preference.

**For example:** If the middle school program you most want your child to attend is a Screened program open to the whole district, rank that *before* your child's current continuing school. If you rank the current continuing school first, your child will be matched there and not considered for the other programs you rank.

### Zoned Students

Students who are zoned to a middle school – or a campus containing multiple middle schools – have priority to attend that school or schools. In order to receive this priority, you must rank your child's zoned school(s) on the middle school application.

As with the continuing fifth graders priority, you do not need to rank your child's zoned school(s) as your first choice in order to receive the priority; however, you should rank your programs in the order that you'd like your child to be considered for them.

Students who do not receive a match to one of the choices ranked on their application are often matched to their zoned school, even if they did not rank it on their application. If space is not available at their zoned school, students are matched to an available seat in the district.

### Students Not Currently Enrolled at a New York City Public School

Students not currently enrolled in a New York City public school – that is, students currently attending a private or parochial school, or new to New York City – will need to request an application for the district in which they live from their local enrollment office. When requesting an application, please provide the enrollment office with a 2014 report card from your child's school with grades, attendance, and teacher comments so that they may be included as part of the admissions process. Private and parochial students are eligible to attend middle school in the district in which they are zoned for middle school.

See the inside back cover for a list of enrollment office locations.



## Specific Information for District 13

In this district, school staff at middle schools that you rank on your child's application will be informed of how you ranked their school within a specific range. For example, the schools that you rank first and second will have the information that you ranked their schools within the range of first or second; the schools that you rank third through fifth will have the information that you ranked them in that range; and the schools that you ranked sixth or higher will have the information that you ranked them in that range.

Schools will **not** see how you ranked other schools; your first choice school will not see the school you ranked second, and so on. This may influence the order in which you decide to rank schools on your child's application; however, all families should rank schools in order of preference.

Schools that admit students from across the city that participate in the middle school admissions process, such as Mark Twain, Professional Performing Arts School, The 30th Avenue School, and the Brooklyn School of Inquiry, are not included in the revealed aspect of the ranking process. That means that families may rank these schools with no disadvantage in the district process. If you rank one of these schools first on the application and a district school second, it will appear to the district school as if you had ranked it first.

## Important Notes

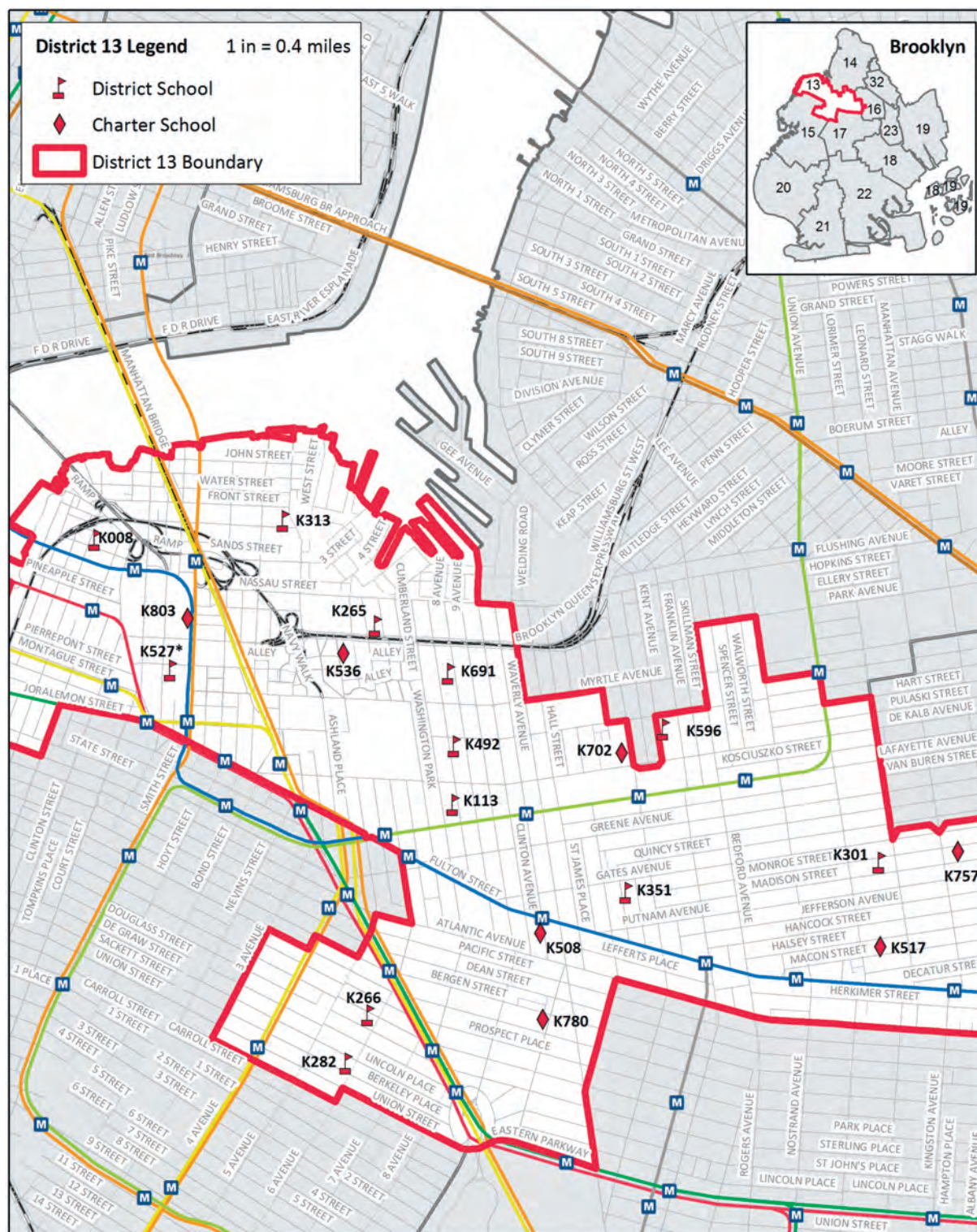
The information listed in this Directory is accurate at the time of publication but may be subject to change. For the most up-to-date information, please contact middle schools directly.

Maps: Certain middle school zones cross district lines. This means you may be zoned to middle school in a district different from the one in which your house appears on the map in this directory. In order to determine your zoned middle school, visit [nyc.gov/schools/schoolsearch](https://nyc.gov/schools/schoolsearch).

## Have Questions? Need Help?

If you need help with your child's application or have any questions about Middle School Admissions, speak to your middle school liaison. You can also call the New York City Department of Education at 718-935-2398 or visit our website at [nyc.gov/schools/middleschool](https://nyc.gov/schools/middleschool).

# District 13 Middle Schools



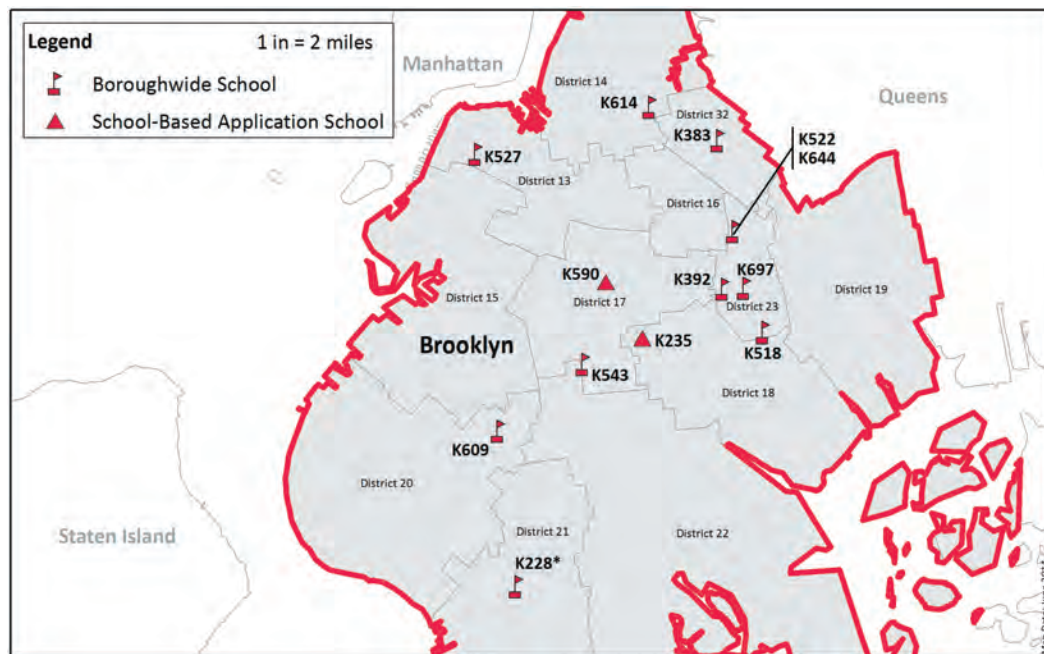
<b>K008</b>	Robert Fulton (P.S. / M.S. 8)
<b>K113</b>	Ronald Edmonds Learning Center (M.S. 113)
<b>K265</b>	Dr. Susan S. McKinney Secondary School of the Arts
<b>K266</b>	Park Place Community (M.S. 266)
<b>K282</b>	Park Slope (P.S. / M.S. 282)
<b>K301</b>	Satellite East Middle School
<b>K313</b>	Satellite West Middle School
<b>K351</b>	The Urban Assembly Unison School
<b>K492</b>	The Urban Assembly Academy of Arts & Letters
<b>K508</b>	Achievement First Endeavor Charter School

<b>K517</b>	Leadership Prep Bedford Stuyvesant Charter School
<b>K527*</b>	Urban Assembly Institute of Math and Science for Young Women (M.S. 527)
<b>K536</b>	Community Roots Charter School
<b>K596</b>	PEACE Academy (M.S. 596)
<b>K691</b>	Fort Greene Preparatory Academy
<b>K702</b>	Community Partnership Charter School
<b>K757</b>	Unity Prep Charter School
<b>K780</b>	Brooklyn East Collegiate Charter School
<b>K803</b>	Brooklyn LAB Charter School

\*Boroughwide School



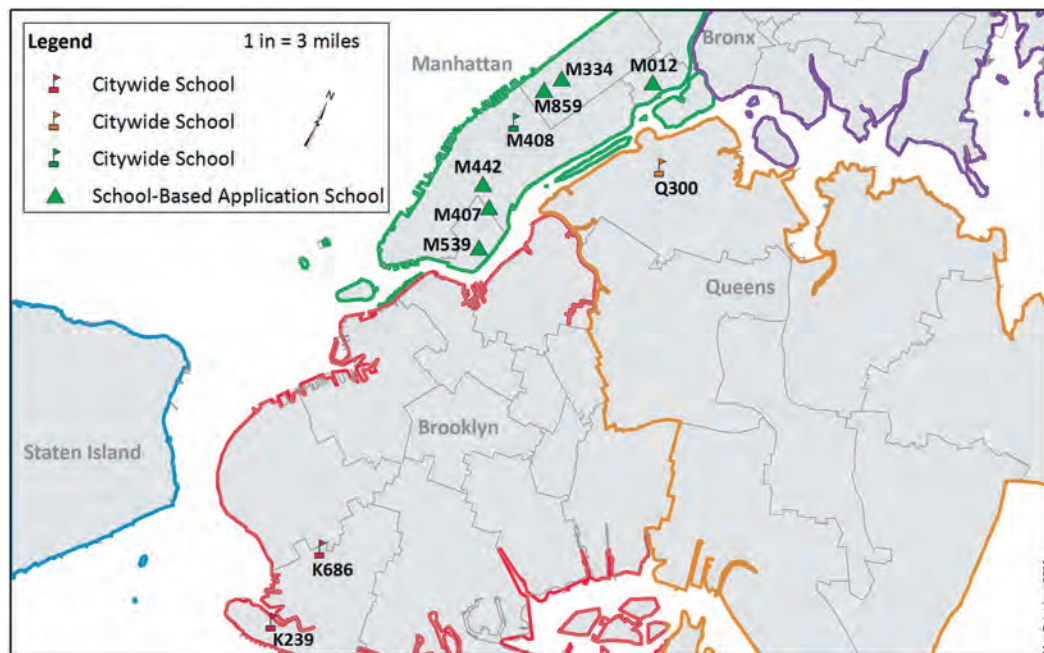
# Boroughwide Middle Schools: Brooklyn



<b>K228*</b>	David A. Boody (I.S. 228) <i>(Dual Language Programs Only)</i>
<b>K235</b>	The Lenox School (P.S. 235)
<b>K383</b>	Philippa Schuyler (J.H.S. 383)
<b>K392</b>	I.S. 392
<b>K518</b>	Knowledge and Power Preparatory Academy V
<b>K522</b>	Mott Hall IV
<b>K527</b>	Urban Assembly Institute of Math and Science for Young Women (M.S. 527)

<b>K543</b>	Science, Technology and Research Early College School at Erasmus
<b>K590</b>	Medgar Evers College Preparatory School
<b>K609</b>	Urban Assembly School for Criminal Justice
<b>K614</b>	The Young Women's Leadership School of Brooklyn
<b>K644</b>	Eagle Academy for Young Men II
<b>K697</b>	Teachers Preparatory Secondary School

# Citywide Middle Schools



<b>M012</b>	Talented and Gifted (TAG) School for Young Scholars
<b>M334</b>	The Anderson School (P.S. 334)
<b>M407</b>	Institute for Collaborative Education (I.C.E.)
<b>M408</b>	Professional Performing Arts School
<b>M442</b>	Ballet Tech / NYC Public School for Dance

<b>M539</b>	New Explorations into Science, Technology and Math School (NEST+m)
<b>M859</b>	Special Music School
<b>K239</b>	Mark Twain for the Gifted & Talented (I.S. 239)
<b>K686</b>	Brooklyn School of Inquiry
<b>Q300</b>	30th Avenue School

### Contact Information

**Address:** 37 Hicks Street  
Brooklyn, NY 11201

**Phone:** 718-834-6740

**Fax:** 718-834-7690

**Email:** 13k008@schools.nyc.gov

**Website:** www.ps8brooklyn.org

**Subway:** 2, 3 to Clark St; 4, 5, M, R to Court St; A, C to High St; F to York St

**Bus:** B103, B25, B26, B38, B41, B54, B67, B69

### Supports for ELL and Students with Disabilities

**Site Accessibility:** Functionally Accessible

**Special Education Services:** This school will provide students with disabilities the supports and services indicated on their IEPs.

**ELL Programs:** ESL

### School Life

**Total Students (grades 6-8):** 110

**Grades (2015-2016):** K-8

**Uniform/Dress Code Enforced:** No

**Academic Portfolio Required:** No

**Community Service Required:** Yes

**Extended Day Program Offered:** No

**Summer Session Offered:** No

**Weekend Program Offered:** No

### School Performance

	What % of Middle School Students...						How Satisfied Are Students With the School?
	Passed English Class?	Passed Math Class?	Passed Social Studies Class?	Passed Science Class?	Were Proficient on the State English Test?	Were Proficient on the State Math Test?	
<b>This School's Performance in 2012-2013</b>	N/A	N/A	N/A	N/A	N/A	N/A	N/A
<b>Average for Similar Schools</b>	N/A	N/A	N/A	N/A	N/A	N/A	N/A

**Quality Review Score:** Proficient (2010-2011)

### About Our School

We believe in fostering relationships with and among our students, engaging and challenging them academically, and frequently celebrating their work. Through our Advisory morning discussions, we support our students' organizational and study skills, provide a space for students to be heard regarding social and emotional challenges, discuss current events, laugh, and play. After lunch, all students return to their Advisories for independent reading. School-wide events include Student Orientation, Monster Mash, Thanksgiving Feast, 80's Party, Spirit Day, and Field Day. Family events include Parent Discussion Circle, Potluck Dinner, New Family Breakfast, Exploration Expositions, and Curriculum Night. Three times a year, students participate in Exploration, which is a deep study of one question. Examples include: "Can art change the world?" "Is our relationship to animals ethical?" "What is courage?" Through workshops, guest speakers, and field studies, students come to their own answers. Students complete a creative project and write an editorial in response to the big question. Each Exploration culminates in an Exposition where students share their work with families and the community.

### Academic Opportunities

**Language Classes:** Spanish

### Extracurricular Activities and Clubs

After school clubs: Guitar, Cooking, Fencing, Dance, Newspaper, Spirit Club

**Special Programs:** Exploration Units

## Admissions Priorities and Programs

### Admissions Priorities

1. Priority to continuing 5th grade students
2. Then to students residing in the zone who sign in at an event
3. Then to students and residents of District 13 who sign in at an event
4. Then to students residing in the zone
5. Then to students and residents of District 13

Program Name	Code	Program Focus	Admissions Method	2014 Seats	2014 Applicants
Robert Fulton (P.S. / M.S. 8)	K008L	Humanities	Limited Unscreened	90	405
<b>Selection Criteria:</b> Students who apply to this program will be randomly selected within the priority groups listed above.					

## Contact Information

**Address:** 300 Adelphi Street  
Brooklyn, NY 11205

**Phone:** 718-834-6734

**Fax:** 718-596-2802

**Email:** DDaught@schools.nyc.gov

**Website:** www.relc113.com

**Subway:** 2, 3, 4, 5, B, D, N, Q, R to Atlantic Ave - Barclays Center; C to Lafayette Ave; G to Clinton-Washington

**Bus:** B103, B25, B38, B41, B45, B52, B54, B63, B69

## Supports for ELL and Students with Disabilities

**Site Accessibility:** Functionally Accessible

**Special Education Services:** This school will provide students with disabilities the supports and services indicated on their IEPs.

**ELL Programs:** ESL

## School Life

**Total Students (grades 6-8):** 717

**Grades (2015-2016):** 6-8

**Uniform/Dress Code Enforced:** Yes

**Academic Portfolio Required:** No

**Community Service Required:** No

**Extended Day Program Offered:** Yes

**Summer Session Offered:** No

**Weekend Program Offered:** No

## School Performance

	What % of Middle School Students...						How Satisfied Are Students With the School?
	Passed English Class?	Passed Math Class?	Passed Social Studies Class?	Passed Science Class?	Were Proficient on the State English Test?	Were Proficient on the State Math Test?	
<b>This School's Performance in 2012-2013</b>	81%	72%	82%	75%	13%	10%	7.6
<b>Average for Similar Schools</b>	89%	87%	88%	89%	18%	21%	7.5

**Quality Review Score:** Developing (2012-2013)

## About Our School

We give extra attention to each child's academic needs while modeling a passion for the performing and fine arts. Parents appreciate our stable learning environment with high academic standards and a strong focus on the arts and technology.

## Academic Opportunities

**Regents Classes:** Comprehensive English, Earth Science, Integrated Algebra

**Language Classes:** Spanish

## Extracurricular Activities and Clubs

LIU After-school Tutorial, Robotics Club, Marching Band, Chess Club, Cycling Club, Saturday Test Preparation, Tennis Club, Golf Club, Jazz Band, Step Team

**Special Programs:** Historically Black College Tours, Ivy League College Tours, Chess Team, Art Exhibits at the Museum of Contemporary African Diasporan Arts (MoCADA) and Brooklyn Museum, Graphic Arts in Mac Lab

**CHAMPS Sports – Boys:** Baseball, Basketball, Soccer

**CHAMPS Sports – Girls:** Basketball

**CHAMPS Sports – Co-ed:** Flag Football, Rugby, Soccer

# Admissions Priorities and Programs

## Admissions Priorities

1. Open to students and residents of District 13

Program Name	Code	Program Focus	Admissions Method	2014 Seats	2014 Applicants
<b>Academy of Performing Arts</b>	<b>K113M</b>	Dance, Theatre Arts, Band, Vocal	Screened	90	224
<b>Selection Criteria:</b> <ul style="list-style-type: none"> <li>• Audition (please contact the school for more information)</li> <li>• Review of Attendance &amp; Punctuality</li> <li>• Review of Grades &amp; Test Scores</li> </ul>					
<b>ACATS (The Academy of Computer &amp; Technology Science)</b>	<b>K113N</b>	Technology	Screened	90	201
<b>Selection Criteria:</b> <ul style="list-style-type: none"> <li>• Diagnostic Test</li> <li>• Review of Attendance &amp; Punctuality</li> <li>• Review of Grades &amp; Test Scores</li> </ul>					
<b>Fine Arts &amp; Design</b>	<b>K113P</b>	Arts	Screened	60	162
<b>Selection Criteria:</b> <ul style="list-style-type: none"> <li>• Audition (please contact the school for more information)</li> <li>• Review of Attendance &amp; Punctuality</li> <li>• Review of Grades &amp; Test Scores</li> </ul>					

Consistent with New York State law, State ELA and Mathematics test results will not be the sole, primary, or major factor in admissions decisions. Instead, multiple measures, which may include State test results, will be used to make admissions decisions for screened programs.

## Contact Information

**Address:** 101 Park Avenue  
Brooklyn, NY 11205

**Phone:** 718-834-6760

**Fax:** 718-834-6776

**Email:** PHolmes@schools.nyc.gov

**Website:** <http://schools.nyc.gov/SchoolPortals/13/K265>

**Subway:** B, Q, R to DeKalb Ave

**Bus:** B38, B54, B57, B62, B67, B69

## Supports for ELL and Students with Disabilities

**Site Accessibility:** Not Accessible

**Special Education Services:** This school will provide students with disabilities the supports and services indicated on their IEPs.

**ELL Programs:** ESL

## School Life

**Total Students (grades 6-8):** 141

**Grades (2015-2016):** 6-12

**Uniform/Dress Code Enforced:** Yes

**Academic Portfolio Required:** No

**Community Service Required:** Yes

**Extended Day Program Offered:** Yes; the McKinney Scholars Program offers enrichment classes in the core academic subjects after school and on Saturdays

**Summer Session Offered:** Yes

**Weekend Program Offered:** Yes; Saturday classes are academically challenging, engaging, and provide students with extra support needed

## School Performance

	What % of Middle School Students...						How Satisfied Are Students With the School?
	Passed English Class?	Passed Math Class?	Passed Social Studies Class?	Passed Science Class?	Were Proficient on the State English Test?	Were Proficient on the State Math Test?	
<b>This School's Performance in 2012-2013</b>	95%	90%	94%	90%	20%	7%	7.2
<b>Average for Similar Schools</b>	85%	83%	86%	86%	8%	7%	7.5

**Quality Review Score:** Proficient (2009-2010)

## About Our School

Students benefit from the many ways that teachers and staff support them. They learn to become empowered thinkers as they develop their creative abilities while striving for academic excellence. Parents value the various ways that teachers and staff encourage and challenge students to exceed their personal best. Parents and students alike appreciate the innovative strategies implemented to teach students core subjects. For instance, students learn mathematics while in robotics class. Additionally, there is an emphasis on improving literacy by enriching students' vocabularies and the increased time students spend reading. Parents are extremely pleased with the growth of the school, the opportunities for students to participate in arts activities, and student preparedness.

## Academic Opportunities

**Regents Classes:** Integrated Algebra, Living Environment

**Enrichment Classes:** ELA Enrichment, Math Enrichment

**Language Classes:** Spanish

## Extracurricular Activities and Clubs

Girls Group, National Junior Honor Society (NJHS), Student Government, Entrepreneurial Leadership, Project Male, Poetry & Writers Institute, Robotics, Cheerleading, McK Steppers, Double Dutch, Crochet Club, Chess, Marching Band, MOUSE Squad, McKinney Scribbers, Think Quest NYC, Ballroom Dancing, Environmental Group

**Special Programs:** Fine Arts, Vocal Music, Instrumental Music, Dance, Drama, Advancement Via Individual Determination (AVID), Urban Advantage, The Noel Pointer Foundation String Program, iZone, Generation Citizen, The Derek Jeter Foundation

**CHAMPS Sports – Boys:** Basketball

**CHAMPS Sports – Girls:** Basketball

# Admissions Priorities and Programs

## Admissions Priorities

1. Open to students and residents of District 13

Program Name	Code	Program Focus	Admissions Method	2014 Seats	2014 Applicants
<b>Dr. Susan S. McKinney Secondary School of the Arts</b>	<b>K265M</b>	Arts - Dance, Drama, Instrumental Music, Vocal Music	Screened	80	209
<b>Selection Criteria:</b> <ul style="list-style-type: none"> <li>• Diagnostic Test</li> <li>• Audition (please contact the school for more information)</li> <li>• Review of Attendance &amp; Punctuality</li> <li>• Review of Grades &amp; Test Scores</li> </ul>					

*Consistent with New York State law, State ELA and Mathematics test results will not be the sole, primary, or major factor in admissions decisions. Instead, multiple measures, which may include State test results, will be used to make admissions decisions for screened programs.*



## Contact Information

**Address:** 62 Park Place  
Brooklyn, NY 11217

**Phone:** 718-857-2291

**Fax:** 718-857-2347

**Email:** 13k266@schools.nyc.gov

**Website:** www.parkplace266.org

**Subway:** 2, 3 to Bergen St; 4, 5, D, N, R to Atlantic Ave - Barclays Center; B, Q to 7th Ave; C to Lafayette Ave

**Bus:** B103, B41, B45, B63, B65, B67, B69

## Supports for ELL and Students with Disabilities

**Site Accessibility:** Not Accessible

**Special Education Services:** This school will provide students with disabilities the supports and services indicated on their IEPs.

**ELL Programs:** ESL

## School Life

**Total Students (grades 6-8):** 142

**Grades (2015-2016):** 6-8

**Uniform/Dress Code Enforced:** Yes; we have a flexible uniform program. Students are asked to show school spirit on a daily basis.

**Academic Portfolio Required:** No

**Community Service Required:** No

**Extended Day Program Offered:** Yes; afternoon sessions are held Tuesdays and Wednesdays

**Summer Session Offered:** Yes; Academic Success Summer Tutoring Academy

**Weekend Program Offered:** Yes; Saturday Test Success Academy

## School Performance

	What % of Middle School Students...						How Satisfied Are Students With the School?
	Passed English Class?	Passed Math Class?	Passed Social Studies Class?	Passed Science Class?	Were Proficient on the State English Test?	Were Proficient on the State Math Test?	
<b>This School's Performance in 2012-2013</b>	80%	80%	75%	87%	12%	10%	7.7
<b>Average for Similar Schools</b>	86%	86%	86%	86%	14%	13%	7.6

**Quality Review Score:** Proficient (2010-2011)

## About Our School

At Park Place Community School (M.S. 266), our mission is to create an environment that promotes respect for racial and cultural diversity; to deliver a rigorous academic curriculum; to utilize best practices for middle school education; to utilize community and technological resources to increase opportunities for intellectual and social development; and to develop well-rounded students through participation in the Arts. All our students receive an opportunity to graduate with high school Regents credits in Math, Science, and Foreign Language. They also have a personal planner, access to online Jupiter Gradebook to monitor academic progress, a school email address, and opportunities to learn chess and to travel out of NY State. In 2013 our students traveled to Washington, D.C. to witness the Presidential Inauguration. We offer three distinct programs for our students: Computer Science, Health and Fitness, and Advocacy.

## Academic Opportunities

**Regents Classes:** French, Integrated Algebra, Living Environment, Spanish

**Enrichment Classes:** Chess, Visual Arts, Second Language, Computer Science, Health & Fitness, Advocacy

**Language Classes:** French, Spanish

## Extracurricular Activities and Clubs

American Sign Language, Student Government, Community Service Club, WYSE Girl's Club, STEM Robotics, Homework Help, Saturday Academy, International Trip, Springbrook Farm Trip

**Special Programs:** Farms for City Kids, Chess in the Schools, Brooklyn Connections, New York Public Library, Science & Technology Entry Program (STEP), Parent Academy, National Junior Honors Society, Math & Science Fair

**CHAMPS Sports – Boys:** Basketball (League)

**CHAMPS Sports – Girls:** Cheerleading

**CHAMPS Sports – Co-ed:** Badminton, Basketball (Developmental), Fencing, Volleyball

**Other Sports:** Fitness Club, Snowboarding

# Admissions Priorities and Programs

## Admissions Priorities

1. Open to students and residents of District 13

Program Name	Code	Program Focus	Admissions Method	2014 Seats	2014 Applicants
<b>Park Place Community (M.S. 266)</b>	<b>K266S</b>	Humanities	Screened	63	167
<b>Selection Criteria:</b> <ul style="list-style-type: none"> <li>• Essay/Writing Sample</li> <li>• Review of Attendance &amp; Punctuality</li> <li>• Review of Grades &amp; Test Scores</li> <li>• Student Interview</li> <li>• Teacher Recommendation</li> </ul>					

*Consistent with New York State law, State ELA and Mathematics test results will not be the sole, primary, or major factor in admissions decisions. Instead, multiple measures, which may include State test results, will be used to make admissions decisions for screened programs.*

### Contact Information

**Address:** 180 6th Avenue  
Brooklyn, NY 11217

**Phone:** 718-622-1626

**Fax:** 718-622-3471

**Email:** KLarkins@schools.nyc.gov

**Website:** <http://schools.nyc.gov/SchoolPortals/13/K282>

**Subway:** 2, 3 to Bergen St; 4 to Grand Army Plaza; B, Q to 7th Ave; R to Union St

**Bus:** B103, B41, B45, B63, B65, B67, B69

### Supports for ELL and Students with Disabilities

**Site Accessibility:** Not Accessible

**Special Education Services:** This school will provide students with disabilities the supports and services indicated on their IEPs.

**ELL Programs:** ESL

### School Life

**Total Students (grades 6-8):** 337

**Grades (2015-2016):** PK-8

**Uniform/Dress Code Enforced:** Yes

**Academic Portfolio Required:** No

**Community Service Required:** No

**Extended Day Program Offered:** Yes

**Summer Session Offered:** No

**Weekend Program Offered:** No

### School Performance

	What % of Middle School Students...						How Satisfied Are Students With the School?
	Passed English Class?	Passed Math Class?	Passed Social Studies Class?	Passed Science Class?	Were Proficient on the State English Test?	Were Proficient on the State Math Test?	
<b>This School's Performance in 2012-2013</b>	80%	71%	81%	78%	28%	14%	7.8
<b>Average for Similar Schools</b>	78%	76%	78%	78%	28%	33%	7.5

**Quality Review Score:** Well Developed (2009-2010)

### About Our School

Our students are excited about the opportunities to extend their classroom learning through regional, national and international travel. "Where are we going next?" is a question we hear often from our students. M.S. 282 focuses on an extensive and diverse program in the arts.

### Academic Opportunities

**Regents Classes:** Integrated Algebra, Living Environment

**Enrichment Classes:** Ensemble Music, Creative Writing, Drama, Art/Technology

### Extracurricular Activities and Clubs

Drama Club, Chess Club, YMCA Leadership Club, Step Team, Tutoring, College Trips, 282 Jewls (Sorority)

**Special Programs:** Writing & Research, Marquis Studios, Global Youth Connect, Middle Grades Initiative (MGI), Advisory

**CHAMPS Sports – Boys:** Basketball, Flag Football, Flag Rugby, Track & Field

**CHAMPS Sports – Girls:** Basketball, Cheerleading, Flag Rugby, Step, Track & Field, Volleyball

**CHAMPS Sports – Co-ed:** Basketball, Flag Football, Flag Rugby

## Admissions Priorities and Programs

### Admissions Priorities

1. Priority to continuing 5th grade students
2. Then to students and residents of District 13 who sign in at an event
3. Then to students and residents of District 13

Program Name	Code	Program Focus	Admissions Method	2014 Seats	2014 Applicants
Park Slope (M.S. 282)	K282L	Arts	Limited Unscreened	99	322
<b>Selection Criteria:</b> Students who apply to this program will be randomly selected within the priority groups listed above.					



### Contact Information

**Address:** 344 Monroe Street  
Brooklyn, NY 11216

**Phone:** 718-789-4251

**Fax:** 718-789-4823

**Email:** KMcPher@schools.nyc.gov

**Website:** <http://schools.nyc.gov/SchoolPortals/13/K301>

**Subway:** A, C to Nostrand Ave; G to Bedford-Nostrand

**Bus:** B15, B25, B26, B38, B43, B44, B44-SBS, B52

### Supports for ELL and Students with Disabilities

**Site Accessibility:** Not Accessible

**Special Education Services:** This school will provide students with disabilities the supports and services indicated on their IEPs.

**ELL Programs:** ESL

### School Life

**Total Students (grades 6-8):** 158

**Grades (2015-2016):** 6-8

**Uniform/Dress Code Enforced:** Yes

**Academic Portfolio Required:** No

**Community Service Required:** Yes

**Extended Day Program Offered:** Yes

**Summer Session Offered:** No

**Weekend Program Offered:** Yes

### School Performance

	What % of Middle School Students...						How Satisfied Are Students With the School?
	Passed English Class?	Passed Math Class?	Passed Social Studies Class?	Passed Science Class?	Were Proficient on the State English Test?	Were Proficient on the State Math Test?	
<b>This School's Performance in 2012-2013</b>	72%	78%	90%	76%	7%	4%	8.1
<b>Average for Similar Schools</b>	79%	82%	80%	84%	7%	7%	7.4

**Quality Review Score:** Proficient (2012-2013)

### About Our School

Students are offered a variety of extracurricular activities at Satellite East Middle School. Parents appreciate the support we provide our students. For example, our Weekend Warriors Program assists our students with their monthly projects and weekly homework assignments by providing them access to laptops, art supplies, and SMART Boards.

### Academic Opportunities

**Language Classes:** Spanish

### Extracurricular Activities and Clubs

**Special Programs:** Weekend Warriors-Project/Homework Assistance, Dance, Visual Art, Spanish

**CHAMPS Sports – Co-ed:** Martial Arts

## Admissions Priorities and Programs

### Admissions Priorities

1. Open to students and residents of District 13

Program Name	Code	Program Focus	Admissions Method	2014 Seats	2014 Applicants
Satellite East Middle School	K301S	Humanities	Screened	90	118
<b>Selection Criteria:</b> <ul style="list-style-type: none"> <li>• Review of Attendance &amp; Punctuality</li> <li>• Review of Grades &amp; Test Scores</li> </ul>					

*Consistent with New York State law, State ELA and Mathematics test results will not be the sole, primary, or major factor in admissions decisions. Instead, multiple measures, which may include State test results, will be used to make admissions decisions for screened programs.*

### Contact Information

**Address:** 209 York Street  
Brooklyn, NY 11201

**Phone:** 718-834-6774

**Fax:** 718-834-2979

**Email:** SHarris42@schools.nyc.gov

**Website:** www.MS313.org

**Subway:** A, C to High St; F to York St

**Bus:** B25, B26, B54, B57, B62, B67, B69

### Supports for ELL and Students with Disabilities

**Site Accessibility:** Not Accessible

**Special Education Services:** This school will provide students with disabilities the supports and services indicated on their IEPs.

**ELL Programs:** ESL

### School Life

**Total Students (grades 6-8):** 119

**Grades (2015-2016):** 6-8

**Uniform/Dress Code Enforced:** Yes

**Academic Portfolio Required:** No

**Community Service Required:** No

**Extended Day Program Offered:** Yes

**Summer Session Offered:** No

**Weekend Program Offered:** Yes

### School Performance

	What % of Middle School Students...						How Satisfied Are Students With the School?
	Passed English Class?	Passed Math Class?	Passed Social Studies Class?	Passed Science Class?	Were Proficient on the State English Test?	Were Proficient on the State Math Test?	
<b>This School's Performance in 2012-2013</b>	82%	76%	75%	81%	11%	14%	6.6
<b>Average for Similar Schools</b>	82%	83%	83%	84%	7%	6%	7.5

**Quality Review Score:** Proficient (2012-2013)

### About Our School

Our student body is diverse and we continually celebrate that diversity by cultivating a school environment in which student engagement is integral to creating a positive school culture and climate that fosters students' social/emotional growth and academic achievement. With these ideals in mind, we also emphasize the following: 1. Focus on academic achievement; 2. Clear curriculum choices; 3. Frequent assessment of student progress and multiple opportunities for improvement; 4. Written responses in performance assessments; and 5. Collaborative scoring of student work.

### Academic Opportunities

**Regents Classes:** Integrated Algebra, Living Environment

**Enrichment Classes:** Life Skills Education, Regents Exam Preparatory Classes, Specialized High School Exam Preparatory Class

### Extracurricular Activities and Clubs

Step and Cheerleading, Student Government, Peer Mediation Program, NYU STEM/Robotics Program, Music

**Special Programs:** ELA and Math State Exam Saturday School, Study Hall, Male Mentoring Program

**CHAMPS Sports – Boys:** Basketball

**Other Sports:** Soccer, Wrestling, Track and Field

## Admissions Priorities and Programs

### Admissions Priorities

1. Open to students and residents of District 13

Program Name	Code	Program Focus	Admissions Method	2014 Seats	2014 Applicants
Satellite West Middle School	K313U	Humanities	Unscreened	70	184
<b>Selection Criteria:</b> Students who apply to this program will be randomly selected.					

## Contact Information

**Address:** 170 Gates Avenue  
Brooklyn, NY 11238

**Phone:** 718-399-1061

**Fax:** 718-857-0548

**Email:** info@uaunison.org

**Website:** www.uaunison.org

**Subway:** C to Clinton-Washington; F, S to Franklin Ave; G to Classon Ave

**Bus:** B25, B26, B38, B44, B44-SBS, B45, B48, B49, B52, B65, B69

## Supports for ELL and Students with Disabilities

**Site Accessibility:** Functionally Accessible

**Special Education Services:** This school will provide students with disabilities the supports and services indicated on their IEPs.

**ELL Programs:** ESL

## School Life

**Total Students (grades 6-8):** 139

**Grades (2015-2016):** 6-8

**Uniform/Dress Code Enforced:** Yes

**Academic Portfolio Required:** Yes; students present portfolios to demonstrate learning growth at the end-of-year celebration

**Community Service Required:** Yes; community service is part of the curriculum

**Extended Day Program Offered:** Yes; Citizen Schools students attend school until 6 PM, Monday to Thursday, with optional trips after school on Fridays

**Summer Session Offered:** Yes

**Weekend Program Offered:** Yes; Saturday Parent/Child Academy

## School Performance

	What % of Middle School Students...						How Satisfied Are Students With the School?
	Passed English Class?	Passed Math Class?	Passed Social Studies Class?	Passed Science Class?	Were Proficient on the State English Test?	Were Proficient on the State Math Test?	
<b>This School's Performance in 2012-2013</b>	100%	70%	90%	100%	9%	8%	6.3
<b>Average for Similar Schools</b>	90%	88%	89%	90%	10%	9%	7.7

**Quality Review Score:** N/A

## About Our School

Every student at The Urban Assembly Unison School builds strong relationships with his/her peers and the adults at Unison while learning in a unique classroom approach called Learning Cultures. Learning Cultures at Unison is perfect for students and families who value individual responsibility and tenacity along with collaborative learning. Unison students create unique and independent learning plans that meet their individual academic needs and goals across their classes, building the independence necessary for success in high school and college. Because the school is small, students are supported everyday to develop academically and emotionally by the many adults who know them on a personal level. And, learning is fun at Unison because everyday students learn in unison! Unison offers a robust extended day program with academic, social, and recreational enrichment. There are frequent school events and a range of field trips. Students are connected to summer, Saturday and after-school tutoring, and enrichment opportunities through school partnerships.

## Academic Opportunities

**Enrichment Classes:** Art, Technology, Drama, Foreign Language

**Language Classes:** Spanish

## Extracurricular Activities and Clubs

Sports, Arts, Academic Support, Community Programs

**Special Programs:** Extended Learning Blocks, Community Apprenticeships, Specialized High School Test Prep

**CHAMPS Sports – Boys:** Basketball, Step, Track & Field

**CHAMPS Sports – Girls:** Basketball, Step, Track & Field

**CHAMPS Sports – Co-ed:** Basketball, Step, Track & Field

# Admissions Priorities and Programs

## Admissions Priorities

1. Priority to students and residents of District 13 who sign in at an event
2. Then to students and residents of District 13

Program Name	Code	Program Focus	Admissions Method	2014 Seats	2014 Applicants
Urban Assembly Unison School	K351L	Humanities	Limited Unscreened	90	166
<b>Selection Criteria:</b> Students who apply to this programs will be randomly selected within the priority groups listed above.					

## Contact Information

**Address:** 225 Adelphi Street  
Brooklyn, NY 11205

**Phone:** 718-222-1605

**Fax:** 718-852-6020

**Email:** JOreill@schools.nyc.gov

**Website:** www.uaal.org

**Subway:** C to Lafayette Ave; G to Clinton-Washington

**Bus:** B25, B38, B52, B54, B57, B62, B69

## Supports for ELL and Students with Disabilities

**Site Accessibility:** Not Accessible

**Special Education Services:** This school will provide students with disabilities the supports and services indicated on their IEPs.

**ELL Programs:** ESL

## School Life

**Total Students (grades 6-8):** 284

**Grades (2015-2016):** K-8

**Uniform/Dress Code Enforced:** No

**Academic Portfolio Required:** No

**Community Service Required:** No

**Extended Day Program Offered:** Yes

**Summer Session Offered:** No

**Weekend Program Offered:** No

## School Performance

	What % of Middle School Students...						How Satisfied Are Students With the School?
	Passed English Class?	Passed Math Class?	Passed Social Studies Class?	Passed Science Class?	Were Proficient on the State English Test?	Were Proficient on the State Math Test?	
<b>This School's Performance in 2012-2013</b>	93%	93%	93%	98%	42%	27%	8.4
<b>Average for Similar Schools</b>	95%	93%	95%	95%	32%	34%	7.6

**Quality Review Score:** Well Developed (2012-2013)

## About Our School

Arts & Letters students benefit from strong relationships with our faculty and programs that support their growth. Ask them! They'll tell you: "You'll work hard here, but it is worth it!" and "The teachers know us so well and challenge us every day!" Each student has an advisor who gets to know the family very well through various communications and events. Online grading, high academic expectations, and lots of community events make Arts & Letters a great place for students and their families.

## Academic Opportunities

**Regents Classes:** Integrated Algebra, Living Environment

**Enrichment Classes:** Intensive Arts Class & Concentration (four times each week): Visual Art (6th Grade), Music & Technology (7th Grade), Theater Arts (8th Grade)

## Extracurricular Activities and Clubs

Specialized High Schools Test Prep, Regents Prep, Freestyle Friday, Extended Day Enrichment (Literature Club, Writing Workshop, Science Extensions, Current Events & Social Issues, Monologue & Audition Preparation, Comic Book Club, Chorus), Student Leadership Committee, Citizen Schools (Free Extended Day Learning Program including apprenticeships with Google, The New York Times and other local companies, field excursions, homework support and college trips), Various Sports

**Special Programs:** Independent Research, Explorations Program, Marquis Studios Program, Urban Word Program, Recreational Arts, Fitness, The Arts & Letters Reading Lab, Advisory

# Admissions Priorities and Programs

## Admissions Priorities

1. Priority to continuing 5th grade students
2. Then to students and residents of District 13

Program Name	Code	Program Focus	Admissions Method	2014 Seats	2014 Applicants
The Urban Assembly Academy Of Arts & Letters	K492S	Arts & Writing	Screened	60	409
<b>Selection Criteria:</b> <ul style="list-style-type: none"> <li>• Review of Attendance &amp; Punctuality</li> <li>• Review of Grades &amp; Test Scores</li> <li>• Student Interview</li> </ul>					

*Consistent with New York State law, State ELA and Mathematics test results will not be the sole, primary, or major factor in admissions decisions. Instead, multiple measures, which may include State test results, will be used to make admissions decisions for screened programs.*

### Contact Information

**Address:** 300 Willoughby Avenue  
Brooklyn, NY 11205

**Phone:** 718-230-3273

**Fax:** 718-230-0173

**Email:** Kgreen18@schools.nyc.gov

**Website:** <http://schools.nyc.gov/SchoolPortals/13/K596>

**Subway:** G to Classon Ave

**Bus:** B38, B44, B44-SBS, B48, B52, B54, B57, B62

### Supports for ELL and Students with Disabilities

**Site Accessibility:** Not Accessible

**Special Education Services:** This school will provide students with disabilities the supports and services indicated on their IEPs.

**ELL Programs:** ESL

### School Life

**Total Students (grades 6-8):** 87

**Grades (2015-2016):** 6-8

**Uniform/Dress Code Enforced:** Yes

**Academic Portfolio Required:** Yes

**Community Service Required:** No

**Extended Day Program Offered:** Yes

**Summer Session Offered:** No

**Weekend Program Offered:** Yes

### School Performance

	What % of Middle School Students...						How Satisfied Are Students With the School?
	Passed English Class?	Passed Math Class?	Passed Social Studies Class?	Passed Science Class?	Were Proficient on the State English Test?	Were Proficient on the State Math Test?	
<b>This School's Performance in 2012-2013</b>	89%	69%	73%	68%	5%	3%	7.1
<b>Average for Similar Schools</b>	85%	84%	86%	85%	7%	6%	7.5

**Quality Review Score:** Developing (2012-2013)

### About Our School

We believe that each child has the potential through his/her voice and actions to change the world. PEACE Academy will empower students to be future leaders through the expertise of dedicated educators who are committed to providing rigorous, differentiated instruction. Our curriculum promotes academic achievement, social development, and personal growth. Working together as a community towards creating a positive impact on our world, PEACE Academy students will graduate prepared to succeed at competitive high schools and colleges, and excel as citizens of the world. We support this vision through a core curriculum that is aligned with the Common Core State Standards. We provide additional support and enrichment through Literacy Intensive and Math Intensive classes, targeting instruction to meet the needs of students in small groups. Students can also take the Integrated Algebra Regents exam to earn high school credit in the eighth grade. Our program also includes visual arts classes and partnerships with Broadway Jr., Sports & Arts, and Arts Connection to complement the academic curriculum. As a small school, we strive to know and meet the needs of every child.

### Academic Opportunities

**Regents Classes:** Integrated Algebra, Living Environment

### Extracurricular Activities and Clubs

Art Club, Arts Connect, Broadway Jr, SASF (art, dance, drama, basketball, flag football, volleyball, floor hockey, soccer, tennis, STEM, homework help, music, photography, drumming, competitive step)

**Special Programs:** Broadway Jr, Art Connection, Student Leadership Council, Tutoring

## Admissions Priorities and Programs

### Admissions Priorities

1. Priority to students and residents of District 13 who sign in at an event
2. Then to students and residents of District 13

Program Name	Code	Program Focus	Admissions Method	2014 Seats	2014 Applicants
P.E.A.C.E. Academy (M.S. 596)	K596L	Humanities	Limited Unscreened	81	50

**Selection Criteria:** Students who apply to this programs will be randomly selected within the priority groups listed above.

## Contact Information

**Address:** 100 Clermont Avenue  
Brooklyn, NY 11205

**Phone:** 718-254-9401

**Fax:** 718-254-9407

**Email:** fortgreeneprep@gmail.com

**Website:** www.fortgreeneprep.org

**Subway:** G to Clinton-Washington

**Bus:** B38, B54, B57, B62, B67, B69

## Supports for ELL and Students with Disabilities

**Site Accessibility:** Not Accessible

**Special Education Services:** This school will provide students with disabilities the supports and services indicated on their IEPs.

**ELL Programs:** ESL

## School Life

**Total Students (grades 6-8):** 257

**Grades (2015-2016):** 6-8

**Uniform/Dress Code Enforced:** Yes; white shirt and khaki pants

**Academic Portfolio Required:** Yes; students build Common Core Learning Standards-aligned portfolios in Math, ELA, Science, and History and must produce exit projects that meet standards in grade eight as part of the graduation requirements. Students in the technology and portfolio arts programs build portfolios in those subjects.

**Community Service Required:** No

**Extended Day Program Offered:** Yes; various clubs are offered after school

**Summer Session Offered:** No

**Weekend Program Offered:** Yes; Saturday Academy

## School Performance

	What % of Middle School Students...						How Satisfied Are Students With the School?
	Passed English Class?	Passed Math Class?	Passed Social Studies Class?	Passed Science Class?	Were Proficient on the State English Test?	Were Proficient on the State Math Test?	
<b>This School's Performance in 2012-2013</b>	91%	91%	93%	94%	19%	6%	7.9
<b>Average for Similar Schools</b>	85%	85%	86%	86%	15%	17%	7.8

**Quality Review Score:** Proficient (2012-2013)

## About Our School

Fort Greene Preparatory Academy is committed to rigorous learning through hands-on activities, learning expeditions in the community, technology, and performing arts as part of daily instruction. Our STEM (Science, Technology, Engineering, and Math) program features weekly labs, hands-on activities, regular scientific demonstrations, and immersion in real world scientific and technological problem solving such as robotic design and computing coding. Through partnerships with New York University and NYU Polytechnic School of Engineering, our scholars benefit from the mentoring of graduate engineering students. Our history and ELA programs are enriched with lively debate, student-directed research, and project-based learning. Through partnerships with Lincoln Center Theater and Irondale Theater Ensemble, scholars enrich their literacy learning through the study of drama and attend live theater performances in every grade. As a small school, we offer a family style environment, where every child is known well by the adults and other children in the building. Through our online grading system, we allow direct parent-to-teacher communication and instant access to a student's progress.

## Academic Opportunities

**Regents Classes:** Integrated Algebra, Living Environment

**Enrichment Classes:** Technology: Innovative Equipment, Robotics, Coding, 3D Printing; Portfolio Art: Drawing, Painting, Sculpture, Computer Design

**Language Classes:** Spanish

## Extracurricular Activities and Clubs

Technology, Robotics, Art, Drama, Music, Step Team

**Special Programs:** Lincoln Center Theater and Irondale Theater Ensemble Drama Partnerships, NYU Poly School of Engineering Robotics and Technology, NYU STEM Emersion, UA Middle School Science Initiative Partnerships

**CHAMPS Sports – Boys:** Basketball

**CHAMPS Sports – Girls:** Basketball

**CHAMPS Sports – Co-ed:** Basketball, Flag Football, Soccer, Track & Field

# Admissions Priorities and Programs

## Admissions Priorities

1. Open to students and residents of District 13

Program Name	Code	Program Focus	Admissions Method	2014 Seats	2014 Applicants
<b>Fort Greene Preparatory Academy</b>	<b>K691S</b>	College Preparatory	Screened	81	329
<b>Selection Criteria:</b> <ul style="list-style-type: none"> <li>• Review of Attendance &amp; Punctuality</li> <li>• Review of Grades &amp; Test Scores</li> <li>• Student Interview</li> </ul>					

*Consistent with New York State law, State ELA and Mathematics test results will not be the sole, primary, or major factor in admissions decisions. Instead, multiple measures, which may include State test results, will be used to make admissions decisions for screened programs.*

# **Boroughwide Schools**

All students and residents of Brooklyn may apply  
to the schools listed on the following pages.



## Contact Information

**Address:** 283 Adams Street  
Brooklyn, NY 11201

**Phone:** 718-260-2300

**Fax:** 718-260-2301

**Email:** uainstitute@gmail.com

**Website:** www.uainstitute.com

**Subway:** 2, 3, 4, 5, R to Borough Hall; A, C, F to Jay St-MetroTech; B, Q to DeKalb Ave; G to Hoyt - Schermerhorn; M to Court St

**Bus:** B103, B25, B26, B38, B41, B45, B54, B57, B61, B62, B63, B65, B67, B69

## Supports for ELL and Students with Disabilities

**Site Accessibility:** Functionally Accessible

**Special Education Services:** This school will provide students with disabilities the supports and services indicated on their IEPs.

**ELL Programs:** ESL

## School Life

**Total Students (grades 6-8):** 223

**Grades (2015-2016):** 6-12

**Uniform/Dress Code Enforced:** No

**Academic Portfolio Required:** No

**Community Service Required:** No

**Extended Day Program Offered:** Yes

**Summer Session Offered:** Yes

**Weekend Program Offered:** No

## School Performance

	What % of Middle School Students...						How Satisfied Are Students With the School?
	Passed English Class?	Passed Math Class?	Passed Social Studies Class?	Passed Science Class?	Were Proficient on the State English Test?	Were Proficient on the State Math Test?	
<b>This School's Performance in 2012-2013</b>	93%	77%	93%	98%	29%	19%	7.5
<b>Average for Similar Schools</b>	94%	93%	95%	95%	32%	33%	7.7

**Quality Review Score:** Proficient (2012-2013)

## About Our School

Our school is designed to encourage and foster the achievement of young women in math, science, and technology. Our challenging curriculum uses interdisciplinary, inquiry-based models of learning that actively engage all students in both math and science and their other academic classes. Through our partners, students have the opportunity to actively participate in a range of internships. Our partners also connect our students with role models and mentors that inspire them to challenge their self-perceptions and the stereotypes that currently exist for women in math and science. Additionally, our after school programs provide unique opportunities for students to explore their unique interests. Urban Assembly Institute (UAI) graduates will possess the skills needed to be successful in high school and college and to make the choices that positively impact their lives.

## Academic Opportunities

**Regents Classes:** Earth Science, Integrated Algebra

## Extracurricular Activities and Clubs

Girls Inc. of NYC, ROOT STEM Gardening, LEGO League, Future Cities, Music Ensemble, Student Government, Robotics, Art, Theater, Media Mavens, Tech Gals, Step, Girls Night Out, DJ'ing 101, Book Club

**Special Programs:** Carrera Treasure Academy: Academic Support, Business & Entrepreneurship, Family Life, Counseling, Medical/Dental Services, Summer Programs; Girls Inc. of NYC: After-school, Internships, Summer Programs

**CHAMPS Sports – Girls:** Basketball, Softball, Track & Field

# Admissions Priorities and Programs

## Admissions Priorities

1. All-Girls School
2. Priority to students and residents of District 13, 14, 15 and 16
3. Then to students and residents of Brooklyn

Program Name	Code	Program Focus	Admissions Method	2014 Seats	2014 Applicants
Urban Assembly Institute of Math and Science for Young Women (M.S. 527)	K527S	Math & Science	Screened	81	488
<b>Selection Criteria:</b> <ul style="list-style-type: none"> <li>• Diagnostic Test</li> <li>• Review of Attendance &amp; Punctuality</li> <li>• Review of Grades &amp; Test Scores</li> <li>• Student Interview</li> </ul>					

Consistent with New York State law, State ELA and Mathematics test results will not be the sole, primary, or major factor in admissions decisions. Instead, multiple measures, which may include State test results, will be used to make admissions decisions for screened programs.



## Contact Information

**Address:** 325 Bushwick Avenue  
Brooklyn, NY 11206

**Phone:** 718-387-5641

**Fax:** N/A

**Email:** Admissions@tywlsbrooklyn.org

**Website:** www.tywlsbrooklyn.org

**Subway:** J, M to Flushing Ave; L to Montrose Ave

**Bus:** B15, B43, B46, B47, B48, B57, B60, Q54

## Supports for ELL and Students with Disabilities

**Site Accessibility:** Not Accessible

**Special Education Services:** This school will provide students with disabilities the supports and services indicated on their IEPs.

**ELL Programs:** ESL

## School Life

**Total Students (grades 6-8):** 155

**Grades (2015-2016):** 6-12

**Uniform/Dress Code Enforced:** Yes

**Academic Portfolio Required:** No

**Community Service Required:** Yes; 10 hours per year

**Extended Day Program Offered:** Yes

**Summer Session Offered:** Yes; summer bridge, summer camps, college opportunities, and summer school

**Weekend Program Offered:** Yes; some sports clubs and extracurricular activities meet on weekends.

## School Performance

	What % of Middle School Students...						How Satisfied Are Students With the School?
	Passed English Class?	Passed Math Class?	Passed Social Studies Class?	Passed Science Class?	Were Proficient on the State English Test?	Were Proficient on the State Math Test?	
<b>This School's Performance in 2012-2013</b>	57%	56%	82%	82%	24%	15%	7.8
<b>Average for Similar Schools</b>	87%	87%	88%	89%	22%	26%	7.5

**Quality Review Score:** Well Developed (2010-2011)

## About Our School

Our school is part of a national network of excellent all-girls college prep schools. Our school is guided by teachers and staff who nurture students' intellectual curiosity. We believe that all students can achieve high standards in every area including math, science, and technology. We have a very supportive environment that includes daily advisory. Part of a network of Young Women's Leadership Network (YWLN) schools, we are an all-girls school with a mission to prepare young women to be successful leaders in their communities. Every YWLN school is supported by the CollegeBound Initiative (CBI) which ensures college access and financial aid options for every student. We work with parents as partners in preparing every student for postsecondary opportunities.

## Academic Opportunities

**Regents Classes:** Integrated Algebra, Living Environment

**Enrichment Classes:** Dance, Music

**Language Classes:** Latin, Spanish

## Extracurricular Activities and Clubs

**Special Programs:** Leadership supported through YWLN network-wide resources, CBI Early Career/College Awareness, Health & Wellness; Science, Technology, Engineering, and Mathematics (STEM) Programs

**CHAMPS Sports – Girls:** Basketball, Flag Football, Rugby, Softball, Volleyball

# Admissions Priorities and Programs

## Admissions Priorities

1. All-Girls School
2. Open to Students and Residents of Brooklyn

Program Name	Code	Program Focus	Admissions Method	2014 Seats	2014 Applicants
The Young Women's Leadership School of Brooklyn	K614M	College Preparatory Program and Leadership Development	Screened	81	773
<b>Selection Criteria:</b> <ul style="list-style-type: none"> <li>• Attendance at an Open House or Information Session</li> <li>• Review of Attendance &amp; Punctuality</li> <li>• Review of Grades &amp; Test Scores</li> </ul>					

Consistent with New York State law, State ELA and Mathematics test results will not be the sole, primary, or major factor in admissions decisions. Instead, multiple measures, which may include State test results, will be used to make admissions decisions for screened programs.

## Contact Information

**Address:** 911 Flatbush Avenue  
Brooklyn, NY 11226

**Phone:** 718-564-2540

**Fax:** 718-564-2541

**Email:** ASlater@schools.nyc.gov

**Website:** www.starec.org

**Subway:** 2, 5, B, Q to Church Ave

**Bus:** B12, B16, B35, B41, B44, B49

## Supports for ELL and Students with Disabilities

**Site Accessibility:** Functionally Accessible

**Special Education Services:** This school will provide students with disabilities the supports and services indicated on their IEPs.

**ELL Programs:** ESL

## School Life

**Total Students (grades 6-8):** 198

**Grades (2015-2016):** 6-12

**Uniform/Dress Code Enforced:** Yes; all middle school students are required to wear a chambray blue shirt (with STAR logo), dark blue bottoms, and all-black shoes or sneakers

**Academic Portfolio Required:** No

**Community Service Required:** No

**Extended Day Program Offered:** Yes; we offer an Afterschool Program

**Summer Session Offered:** No

**Weekend Program Offered:** Yes; we offer a Saturday Academy Test Preparation Program

## School Performance

	What % of Middle School Students...						How Satisfied Are Students With the School?
	Passed English Class?	Passed Math Class?	Passed Social Studies Class?	Passed Science Class?	Were Proficient on the State English Test?	Were Proficient on the State Math Test?	
<b>This School's Performance in 2012-2013</b>	97%	98%	97%	100%	36%	36%	7.5
<b>Average for Similar Schools</b>	97%	96%	96%	97%	45%	48%	7.6

**Quality Review Score:** Well Developed (2010-2011)

## About Our School

Science, Technology and Research (STAR) Early College School at Erasmus is a small Early College Network 6-12 school. Our middle school is divided into houses, which give students a strong sense of community at the school. Our dynamic team of teachers and Brooklyn College professors are eager to prepare students interested in science, mathematics, and technology for college and the world of work. With our partners, we offer a range of challenging academic courses that give students firsthand exposure to the demands of high school and college by using field-based and hands-on methods of instruction. Students will use the rich resources on the Brooklyn College and other City University of New York campuses as their learning laboratories. In addition to their high school diploma, our high school students may earn 30 or more college credits, which may qualify them for Advanced Placement status at Brooklyn College and other City and State Colleges and Universities of New York.

## Academic Opportunities

**Regents Classes:** Earth Science, Integrated Algebra, Living Environment

**Enrichment Classes:** Art, Music

**Language Classes:** French

## Extracurricular Activities and Clubs

Anime, Art, Basketball, Cheerleading, House System (explained below)

**Special Programs:** Upon entry, students are entered into one of the following houses: Harvard, Yale, Columbia, or University of the West Indies. Throughout the year, the houses compete in academic and extracurricular activities. Each house is awarded points according to how well they compete. At the end of the year, the members of the winning house are awarded a grand trophy as well as an end-of-the-year prize.

**CHAMPS Sports – Boys:** Basketball, Step, Swimming

**CHAMPS Sports – Girls:** Basketball, Dance, Step, Swimming

# Admissions Priorities and Programs

## Admissions Priorities

1. Priority to students and residents of District 17
2. Then to students and residents of Brooklyn

Program Name	Code	Program Focus	Admissions Method	2014 Seats	2014 Applicants
<b>Science, Technology, and Research Early College School at Erasmus</b>	<b>K543M</b>	Science & Math	Screened	70	1430
<b>Selection Criteria:</b> <ul style="list-style-type: none"> <li>• Attendance at an Open House or Information Session</li> <li>• Review of Attendance &amp; Punctuality</li> <li>• Review of Test Scores</li> <li>• Student Interview</li> <li>• Writing Sample</li> </ul>					

Consistent with New York State law, State ELA and Mathematics test results will not be the sole, primary, or major factor in admissions decisions. Instead, multiple measures, which may include State test results, will be used to make admissions decisions for screened programs.

## Contact Information

**Address:** 1186 Carroll Street  
Brooklyn, NY 11225

**Phone:** 718-703-5400

**Fax:** 718-703-5600

**Email:** mwiltsh@schools.nyc.gov

**Website:** www.mecps.org

**Subway:** 2, 5 to President S; 3 to Nostrand Ave; 4, F, S to Franklin Ave

**Bus:** B43, B44, B44-SBS, B45, B48, B49

## Supports for ELL and Students with Disabilities

**Site Accessibility:** Functionally Accessible

**Special Education Services:** This school will provide students with disabilities the supports and services indicated on their IEPs.

**ELL Programs:** ESL

## School Life

**Total Students (grades 6-8):** 275

**Grades (2015-2016):** 6-12

**Uniform/Dress Code Enforced:** Yes; mandatory uniform requirement

**Academic Portfolio Required:** No

**Community Service Required:** No

**Extended Day Program Offered:** Yes; students are engaged in afterschool tutoring, peer tutoring, extracurricular activities and clubs

**Summer Session Offered:** Yes; mandatory summer school for all grades

**Weekend Program Offered:** Yes; Saturdays 9:00 AM – 1:00 PM, Regents Prep classes, NYS ELA and Math preparation

## School Performance

	What % of Middle School Students...						How Satisfied Are Students With the School?
	Passed English Class?	Passed Math Class?	Passed Social Studies Class?	Passed Science Class?	Were Proficient on the State English Test?	Were Proficient on the State Math Test?	
<b>This School's Performance in 2012-2013</b>	97%	94%	96%	96%	62%	65%	7.7
<b>Average for Similar Schools</b>	98%	97%	97%	97%	65%	64%	7.8

**Quality Review Score:** Proficient (2012-2013)

## About Our School

Students are immersed in academically challenging studies with requirements that include a three-year sequence in mathematics, Chinese, science, social studies, and the arts. Students have an opportunity to complete the following regents by the end of eighth grade: Integrated Algebra, Geometry, Algebra 2/Trigonometry, Living Environment, Earth Science, Physics, World History, US History, English, and the Chinese LOTE. Student creativity, character development, and social responsibility are encouraged and nurtured through individualized guidance, athletics, clubs, fine and performing arts events, and mentorships.

## Academic Opportunities

**Regents Classes:** Algebra 2/Trigonometry, Chemistry, Comprehensive English, Earth Science, French, Geometry, Global History and Geography, Integrated Algebra, Living Environment, Physics, Spanish, U.S. History and Government

**Enrichment Classes:** Marching Band, Chorus, Fine Arts, Dance, Steel Pan, Piano

**Language Classes:** Chinese (Mandarin), French, Spanish

## Extracurricular Activities and Clubs

Art Club, Junior National Honor Society, Peer Mediation/Tutoring, Saturday Academy

**CHAMPS Sports – Boys:** Basketball, Dance, Soccer, Swimming, Track & Field

**CHAMPS Sports – Girls:** Basketball, Dance, Swimming, Track & Field

**CHAMPS Sports – Co-ed:** Dance, Swimming, Track & Field

This school has a school-based application process.  
Please contact the school for information about how to apply.

## Contact Information

**Address:** 525 Lenox Road  
Brooklyn, NY 11203  
**Phone:** 718-773-4869  
**Fax:** 718-773-0048  
**Email:** msosis@schools.nyc.gov  
**Website:** <http://schools.nyc.gov/SchoolPortals/18/K235>  
**Subway:** N/A  
**Bus:** B12, B35, B44

## Supports for ELL and Students with Disabilities

**Site Accessibility:** Functionally Accessible  
**Special Education Services:** This school will provide students with disabilities the supports and services indicated on their IEPs.  
**ELL Programs:** ESL

## School Life

**Total Students (grades 6-8):** 296  
**Grades (2015-2016):** PK-8  
**Uniform/Dress Code Enforced:** Yes; navy blue trousers (skirt just above the knee for ladies) and a white collared shirt or blouse  
**Academic Portfolio Required:** No  
**Community Service Required:** No  
**Extended Day Program Offered:** Yes; we offer additional support in our accelerated programs for students in need. In addition, we offer several voluntary enrichment programs.  
**Summer Session Offered:** No  
**Weekend Program Offered:** No

## School Performance

	What % of Middle School Students...						How Satisfied Are Students With the School?
	Passed English Class?	Passed Math Class?	Passed Social Studies Class?	Passed Science Class?	Were Proficient on the State English Test?	Were Proficient on the State Math Test?	
<b>This School's Performance in 2012-2013</b>	100%	100%	100%	100%	79%	80%	7.1
<b>Average for Similar Schools</b>	78%	76%	79%	78%	29%	34%	7.6

**Quality Review Score:** Proficient (2010-2011)

## About Our School

The Lenox Academy, an academically accelerated program for middle school students, is located in the Canarsie section of Brooklyn and houses approximately 300 students in grades six through eight. Ever-evolving, the Lenox Academy offers an enriched curriculum designed to prepare our students for the 21st century. Our main focus is for students to gain integrated literacy, science, and math skills within the framework of Bloom's Taxonomy for Higher Order Thinking and Webb's Depth of Knowledge. The program provides the highest quality education within a learning environment that supports and nourishes communities of young learners. Since its inception, Lenox Academy's rigorous academic program coupled with a highly skilled and experienced staff has proven successful. Approximately 25 percent of our eighth grade students from the class of 2013 were accepted to specialized high schools. Most have received acceptances to select public high schools while others have accepted placements in private day and boarding schools through scholarships granted by Prep 9. Ultimately, all of our students are expected to attend top universities and colleges of their choosing across the country as evidenced by the achievement of our alumni. Lenox Academy promotes academic excellence and challenges students to meet NYS standards with distinction. As a result, over 95 percent of our students met standards [Level 3] or met standards with distinction [Level 4] on the 2011-12 New York State Standardized exams in English Language Arts & Mathematics. All of our seniors are administered the Living Environment Regents and Spanish Proficiency exam, and around half take the Integrated Algebra Regents. Our results here are impressive: on average, approximately 98% of our 8th graders graduate from Lenox Academy with six high school credits.

## Academic Opportunities

**Regents Classes:** Integrated Algebra, Living Environment  
**Enrichment Classes:** Fine Art  
**Language Classes:** Spanish

## Extracurricular Activities and Clubs

Competitive Learning, Game Maker 3D, Glee Chorus, Hispanic Culture, Specialized High School Prep, Zoology  
**Special Programs:** Brainology: Teaching the Growth Mindset across curricula, Grade 6: Theater for a New Audience/Broadway, Grade 7: Day trip to Philadelphia, Grade 8: Overnight trip to Boston or Washington D.C., All Grades: Multiple trips to BMA & Symphony Space, Career Week culminating in Career Day  
**CHAMPS Sports – Boys:** Basketball, Soccer, Volleyball  
**CHAMPS Sports – Girls:** Basketball, Soccer, Volleyball  
**CHAMPS Sports – Co-ed:** Basketball, Soccer, Volleyball

This school has a school-based application process.  
Please contact the school for information about how to apply.

**Contact Information**

**Address:** 4200 16th Avenue  
Brooklyn, NY 11204

**Phone:** 718-438-3893

**Fax:** 718-438-3527

**Email:** pmcdonald@uascriminaljustice.org

**Website:** www.uascriminaljustice.org

**Subway:** F to Ditmas Ave

**Bus:** B11, B16, B35, B67, B8

**Supports for ELL and Students with Disabilities**

**Site Accessibility:** Functionally Accessible

**Special Education Services:** This school will provide students with disabilities the supports and services indicated on their IEPs.

**ELL Programs:** ESL

**School Life**

**Total Students (grades 6-8):** 183

**Grades (2015-2016):** 6-12

**Uniform/Dress Code Enforced:** Yes

**Academic Portfolio Required:** No

**Community Service Required:** No

**Extended Day Program Offered:** Yes

**Summer Session Offered:** Yes

**Weekend Program Offered:** Yes

**School Performance**

	What % of Middle School Students...						How Satisfied Are Students With the School?
	Passed English Class?	Passed Math Class?	Passed Social Studies Class?	Passed Science Class?	Were Proficient on the State English Test?	Were Proficient on the State Math Test?	
<b>This School's Performance in 2012-2013</b>	93%	85%	95%	89%	29%	22%	8.3
<b>Average for Similar Schools</b>	86%	85%	86%	86%	15%	17%	7.7

**Quality Review Score:** Developing (2011-2012)

**About Our School**

As a 6-12 school, we believe that middle school is the foundation for high school and college success. In class, students are academically challenged, reading high level texts and engaging in inquiry-based learning. We also believe that middle school is a time to teach students the habits necessary for academic success such as organization and time management. Over the last seven years we have created a strong culture that emphasizes order and structure, rigor and learning, community and positivity. We offer many after-school activities including music, drama, dance, and various sports. Our teachers are accessible, and we have small class sizes and give individual attention to our students. We excite our students about learning, reading, and exploring the world. We offer mobile iPads, laptops, SMART Boards, and wireless internet. We encourage our students to continue at UASCJ through high school.

**Academic Opportunities**

**Regents Classes:** Integrated Algebra

**Enrichment Classes:** Drama, Visual Art, Technology, Book Club

**Extracurricular Activities and Clubs**

Junior Iron Chef (Cooking Club), Afro-Latin Jazz (music), Floor Hockey, Dance

**Special Programs:** Peer Tutoring, Baker's Brunches, overnight trips to Philadelphia and Washington, D.C., 6th grade overnight trip to a Vermont farm

**CHAMPS Sports – Girls:** Cheerleading, Double-Dutch

**Admissions Priorities and Programs****Admissions Priorities**

1. All-Girls School
2. Open to students and residents of Brooklyn

Program Name	Code	Program Focus	Admissions Method	2014 Seats	2014 Applicants
Urban Assembly School for Criminal Justice	K609U	Humanities	Unscreened	81	481
<b>Selection Criteria:</b> Students who apply to this program will be randomly selected.					

**Contact Information**

**Address:** 228 Avenue S  
Brooklyn, NY 11223

**Phone:** 718-375-7635

**Fax:** 718-376-1209

**Email:** DDAngelo3@schools.nyc.gov

**Website:** <http://schools.nyc.gov/SchoolPortals/21/K228>

**Subway:** F to Kings Highway; N to Ave U

**Bus:** B3, B4, B82

**Supports for ELL and Students with Disabilities**

**Site Accessibility:** Functionally Accessible

**Special Education Services:** This school will provide students with disabilities the supports and services indicated on their IEPs.

**ELL Programs:** ESL; Dual Language: Chinese, Spanish, Russian

**School Life**

**Total Students (grades 6-8):** 1047

**Grades (2015-2016):** 6-8

**Uniform/Dress Code Enforced:** No

**Academic Portfolio Required:** No

**Community Service Required:** Yes

**Extended Day Program Offered:** No

**Summer Session Offered:** No

**Weekend Program Offered:** Yes

**Academic Opportunities**

**Regents Classes:** Earth Science, Integrated Algebra, Living Environment

**Enrichment Classes:** Specialized High School Preparation Classes (Grades 6 & 7)

**Language Classes:** Chinese (Mandarin), Russian, Spanish

**School Performance**

	What % of Middle School Students...						How Satisfied Are Students With the School?
	Passed English Class?	Passed Math Class?	Passed Social Studies Class?	Passed Science Class?	Were Proficient on the State English Test?	Were Proficient on the State Math Test?	
<b>This School's Performance in 2012-2013</b>	98%	95%	96%	97%	23%	32%	8.6
<b>Average for Similar Schools</b>	93%	92%	94%	93%	27%	30%	7.5

**Quality Review Score:** Proficient (2010-2011)

**About Our School**

I.S. 228 offers a creative environment that brings out students' talents in safe, encouraging, and challenging ways. We showcase our students' creative work throughout Brooklyn and beyond, whether through our symphony, our championship chess team, or our Chinese dancers. Students know that the school champions respect for all and has zero tolerance for bullies. Parents are treated as respected partners. They are supported by the district's first Parent Engagement Center. Parents are kept in the communication loop throughout the year. They take part in an active Parent Teacher Association. In addition, parents know that the school is a place where they can find resources that can help their lives in many ways. I.S. 228 offers free night classes that teach English as a Second Language to the parents of new immigrant students and other interested adults. I.S. 228 has a fully differentiated, high-tech "School of One" math program operating full-time. This program has been featured in national media. I.S. 228 is the only middle school in District 21 that offers Dual Language Russian, Chinese, and Spanish programs.

**Extracurricular Activities and Clubs**

21st Century Community Learning Center/NYJTL After-school Program (Arts, Athletics & Enrichment Classes), Hip Hop Team, Chinese Dance Troupe, Math Team, Council for Unity Program, Regents & Specialized High School Prep, Music, Enrichment, Drum Line, Computer Technology/Audio-Visual Squad, Championship Chess Team, Chinese Art  
**Special Programs:** Project BOOST (Building Options and Opportunities for Students) Program; Music Programs: Symphony Orchestra, Jazz Band, Symphonic Band, Concert Band, Chorus; Yearbook/School Newspaper; Art; Dance; Robotics; Science Magnet  
**CHAMPS Sports – Boys:** Basketball, European Team Handball, Soccer  
**CHAMPS Sports – Girls:** Cheerleading, Handball, Volleyball  
**CHAMPS Sports – Co-ed:** Basketball, Handball

**Admissions Priorities and Programs****Admissions Priorities**

1. Open to students and residents of Brooklyn

Program Name	Code	Program Focus	Admissions Method	2014 Seats	2014 Applicants
<b>David A. Boody (I.S. 228): Chinese Dual Language Program</b>	<b>K228M</b>	Bilingualism	Screened: Language	60	413
<b>Selection Criteria:</b> Priority to the following students: <ul style="list-style-type: none"> <li>English Language Learners (ELLs)</li> <li>Heritage Language Speakers of the target language</li> <li>Participants of Elementary level Dual Language and Transitional Bilingual Education programs in the target language</li> </ul>					
<b>David A. Boody (I.S. 228): Russian Dual Language Program</b>	<b>K228N</b>	Bilingualism	Screened: Language	60	392
<b>Selection Criteria:</b> Priority to the following students: <ul style="list-style-type: none"> <li>English Language Learners (ELLs)</li> <li>Heritage Language Speakers of the target language</li> <li>Participants of Elementary level Dual Language and Transitional Bilingual Education programs in the target language</li> </ul>					
<b>David A. Boody (I.S. 228): Spanish Dual Language Program</b>	<b>K228P</b>	Bilingualism	Screened: Language	60	669
<b>Selection Criteria:</b> Priority to the following students: <ul style="list-style-type: none"> <li>English Language Learners (ELLs)</li> <li>Heritage Language Speakers of the target language</li> <li>Participants of Elementary level Dual Language and Transitional Bilingual Education programs in the target language</li> </ul>					

**\*This school also offers programs open only to students and residents of District 21. Please see the District 21 directory for more details.**



**Contact Information**

**Address:** 104 Sutter Avenue  
Brooklyn, NY 11212

**Phone:** 718-498-2491

**Fax:** 718-346-2804

**Email:** [ijoseph2@schools.nyc.gov](mailto:ijoseph2@schools.nyc.gov)

**Website:** [http://edline.net/pages/IS\\_392](http://edline.net/pages/IS_392)

**Subway:** 3 to Sutter Ave - Rutland Road

**Bus:** B12, B14, B15, B47, B60, B65, B7

**Supports for ELL and Students with Disabilities**

**Site Accessibility:** Functionally Accessible

**Special Education Services:** This school will provide students with disabilities the supports and services indicated on their IEPs.

**ELL Programs:** ESL

**School Life**

**Total Students (grades 6-8):** 266

**Grades (2015-2016):** 6-8

**Uniform/Dress Code Enforced:** Yes; all students are expected to wear their uniforms daily. Our school shirts are embossed with our school logo. Our policy builds school pride, unity, and a sense of community. Several dress-down days are incorporated.

**Academic Portfolio Required:** Yes; all students will complete two portfolios, one in ELA and another in mathematics. The work samples are compilations of the work throughout the school. Students collaborate with teachers to choose the pieces to include in their portfolios.

**Community Service Required:** Yes; students can select a community service project based on their interest.

**Extended Day Program Offered:** Yes; our extended program is inclusive of academic enrichment and remediation.

**Summer Session Offered:** No

**Weekend Program Offered:** Yes; we offer a Saturday School program for students in need of additional academic support.

**School Performance**

	What % of Middle School Students...						How Satisfied Are Students With the School?
	Passed English Class?	Passed Math Class?	Passed Social Studies Class?	Passed Science Class?	Were Proficient on the State English Test?	Were Proficient on the State Math Test?	
<b>This School's Performance in 2012-2013</b>	95%	94%	88%	94%	57%	59%	7.8
<b>Average for Similar Schools</b>	97%	96%	97%	97%	52%	52%	7.6

**Quality Review Score:** Proficient (2011-2012)

**About Our School**

Intermediate School 392, located in Brooklyn, is a 6th-8th grade middle school with 300 students. Our mission is to establish and maintain a school environment that is stimulating, challenging, and nurturing. We promote high levels of academic achievement utilizing a rigorous, standards-based, interdisciplinary curriculum focusing on the higher-order thinking skills of application, synthesis, and evaluation. This curriculum will infuse the arts, create articulate public speakers, and teach students to behave in a socially acceptable manner so that they can become productive members of society. The Leadership Program provides mentoring for at-risk male students with successful role models from the community. Furthermore, to build school spirit and develop students' personal interests, various clubs are offered during our after-school program. Parents are also significant contributors within the school community, working harmoniously with the staff to ensure their children's success. At I.S. 392, we truly live by the mantra of the African proverb, "It takes a whole village to raise a child."

**Academic Opportunities**

**Regents Classes:** Integrated Algebra, Living Environment, Spanish

**Enrichment Classes:** Visual Arts, Dance, Journalism, Photography, Pottery

**Language Classes:** Spanish

**Extracurricular Activities and Clubs**

Dance/Theater, Violin, Annual School Olympics, Lotus Music & Dance

**Special Programs:** NYS Reward School, National Jr. Honors Society, Annual International Trip, Book Buddies Program w/Corporate Partners (incl. Disney), Teachers & Writers Collaborative, Live Theater & Bklyn Connections

**CHAMPS Sports – Boys:** Basketball, Dance, Rugby, Soccer, Step, Track & Field, Volleyball

**CHAMPS Sports – Girls:** Dance, Rugby, Soccer, Step, Track & Field, Volleyball

**CHAMPS Sports – Co-ed:** Dance, Rugby, Soccer, Step, Track & Field, Volleyball

**Admissions Priorities and Programs****Admissions Priorities**

1. Priority to students and residents of District 23
2. Then to students and residents of Brooklyn

Program Name	Code	Program Focus	Admissions Method	2014 Seats	2014 Applicants
I.S. 392	K392S	Humanities and the Arts	Screened	110	770
<b>Selection Criteria:</b> <ul style="list-style-type: none"> <li>• Diagnostic Test</li> <li>• Review of Test Scores</li> <li>• Student Interview</li> <li>• Teacher Recommendation</li> </ul>					

*Consistent with New York State law, State ELA and Mathematics test results will not be the sole, primary, or major factor in admissions decisions. Instead, multiple measures, which may include State test results, will be used to make admissions decisions for screened programs.*

## Contact Information

**Address:** 985 Rockaway Avenue  
Brooklyn, NY 11212

**Phone:** 718-922-4690

**Fax:** N/A

**Email:** [lpettifordwar@schools.nyc.gov](mailto:lpettifordwar@schools.nyc.gov)

**Website:** <http://schools.nyc.gov/SchoolPortals/23/K518>

**Subway:** 3 to Rockaway Ave; L to New Lots Ave

**Bus:** B15, B35, B60, B8

## Supports for ELL and Students with Disabilities

**Site Accessibility:** Not Accessible

**Special Education Services:** This school will provide students with disabilities the supports and services indicated on their IEPs.

**ELL Programs:** ESL

## School Life

**Total Students (grades 6-8):** 233

**Grades (2015-2016):** 6-8

**Uniform/Dress Code Enforced:** Yes; Dress for Success on Mondays, including a jacket and tie; the rest of the week, KAPPA polo shirt and khaki pants or skirt

**Academic Portfolio Required:** No

**Community Service Required:** Yes; 20 hours of community service for 8th graders

**Extended Day Program Offered:** Yes; January to April, one hour after school twice a week and 3 hours on Saturday (9:00 AM – 12:00 PM)

**Summer Session Offered:** No

**Weekend Program Offered:** No

## Academic Opportunities

**Regents Classes:** Integrated Algebra

**Enrichment Classes:** We have an arts program that generally involves 6th and 7th grade students. We also have a modern computer lab and offer technology courses.

**Language Classes:** Spanish

## School Performance

	What % of Middle School Students...						How Satisfied Are Students With the School?
	Passed English Class?	Passed Math Class?	Passed Social Studies Class?	Passed Science Class?	Were Proficient on the State English Test?	Were Proficient on the State Math Test?	
<b>This School's Performance in 2012-2013</b>	96%	97%	95%	96%	18%	12%	7.6
<b>Average for Similar Schools</b>	83%	81%	79%	83%	14%	15%	7.7

**Quality Review Score:** Proficient (2010-2011)

## About Our School

KAPPA V / M.S. 518 is a high performing 6-8 grade middle school. KAPPA is modeled after the acclaimed KIPP Academy in the Bronx. Candidates apply to enter our school and, through an interview process, this gives us the opportunity to accept solid students with college in their future. We foster a nurturing environment that supports, challenges, and raises the expectations for youth in Brooklyn. We are an accelerated learning program where our emphasis is placed on teamwork, cooperation, discipline, reading, writing, and mathematics. Students and staff must act with integrity at all times. We believe that there is no substitute for hard work and discipline. Education allows students to dream by equipping them with the skills they need to make their dreams come true. Our focus is on respect and responsibility. KAPPA stands for "Knowledge and Power Preparatory Academy," and the model stresses high academic expectations in a supportive atmosphere with rewards for high achievement. Parent involvement is also emphasized. Open Houses will be held in October and November. Please contact our parent coordinator, Ms. Juanita Williams, at (718) 922-4690 for Open House dates and times.

## Extracurricular Activities and Clubs

Beacon/PAL, located in our building, offers dance (African and Hip-Hop), photography, homework helper, and computer lab

**Special Programs:** We take many trips and visit college campuses and museums. We offer a monthly math night for parents. Spelling Bees and Multicultural Night are just the start of some of our activities. We have a student government.

**CHAMPS Sports – Boys:** Basketball, Dance, Flag Football, Step

**CHAMPS Sports – Girls:** Basketball, Dance, Double-Dutch, Flag Football, Step

# Admissions Priorities and Programs

## Admissions Priorities

1. Priority to students and residents of District 23
2. Then to students and residents of Brooklyn

Program Name	Code	Program Focus	Admissions Method	2014 Seats	2014 Applicants
KAPPA V	K518S	Academics, Respect & Responsibility	Screened	100	628
<b>Selection Criteria:</b> <ul style="list-style-type: none"> <li>• Attendance at an open house or information session</li> <li>• Review of Attendance &amp; Punctuality</li> <li>• Review of Grades &amp; Test Scores</li> <li>• Student Interview</li> </ul>					

Consistent with New York State law, State ELA and Mathematics test results will not be the sole, primary, or major factor in admissions decisions. Instead, multiple measures, which may include State test results, will be used to make admissions decisions for screened programs.



**Contact Information**

**Address:** 1137 Herkimer Street  
Brooklyn, NY 11233

**Phone:** 718-485-5240

**Fax:** N/A

**Email:** ljackson@motthall4.com; ljackson6@schools.nyc.gov

**Website:** www.motthall4.com

**Subway:** A to Broadway Junction; C to Rockaway Ave; J, Z to Chauncey St

**Bus:** B12, B20, B25, B47, B60, B65, B7, Q24

**Supports for ELL and Students with Disabilities**

**Site Accessibility:** Not Accessible

**Special Education Services:** This school will provide students with disabilities the supports and services indicated on their IEPs.

**ELL Programs:** ESL

**School Life**

**Total Students (grades 6-8):** 204

**Grades (2015-2016):** 6-8

**Uniform/Dress Code Enforced:** Yes; khaki pants, school uniform shirt with logo, all-black sneakers only, ties/vest optional

**Academic Portfolio Required:** No

**Community Service Required:** No; 8th grade students have to complete 100 community service hours

**Extended Day Program Offered:** Yes; Monday through Wednesday is extended day

**Summer Session Offered:** No

**Weekend Program Offered:** Yes; Saturday school is offered from 9:00 AM – 12:00 PM

**School Performance**

	What % of Middle School Students...						How Satisfied Are Students With the School?
	Passed English Class?	Passed Math Class?	Passed Social Studies Class?	Passed Science Class?	Were Proficient on the State English Test?	Were Proficient on the State Math Test?	
<b>This School's Performance in 2012-2013</b>	N/A	N/A	N/A	N/A	16%	9%	8.2
<b>Average for Similar Schools</b>	N/A	N/A	N/A	N/A	21%	27%	7.4

**Quality Review Score:** Proficient (2012-2013)

**About Our School**

It is our mission at Mott Hall IV to develop and nurture academic and social leaders by providing a safe environment, which promotes mutual respect among scholars, teachers, parents, administrators, and the community. Through our diverse and rigorous interdisciplinary curriculum, our scholars will enter high school fully prepared to compete globally, and work towards college and career readiness. The academic experience at Mott Hall IV will stimulate students' curiosity and critical thinking in order to create productive citizens and global leaders. It is our vision that all stakeholders will work collaboratively to ensure scholars receive a standard-based rigorous academic education that promotes a commitment to leadership, service, and advocacy. The attainment of this vision directly relates to Mott Hall IV's commitment to the school community to provide quality education to all students. It is essential that our students live and embody our core values, which are accountability, leadership, integrity, pride, respect, service, and teamwork.

**Academic Opportunities**

**Regents Classes:** Algebra 2/Trigonometry, Living Environment

**Enrichment Classes:** Music, Art, Technology, Gym/Health

**Language Classes:** Spanish

**Extracurricular Activities and Clubs**

Book Club, GENTS (Young Men's Group), Girls on a Mission, Student Government Association

**Special Programs:** Washington DC (Honors Trip), Learn to Grow (Community Service), Stem Program, Pencil Entrepreneurship Program, Great Adventure Math and Science Program, Broadway Theater Trips

**CHAMPS Sports – Boys:** Basketball, Flag Football, Track & Field

**CHAMPS Sports – Girls:** Flag Football, Softball, Step, Track & Field

**CHAMPS Sports – Co-ed:** Flag Football, Track & Field

**Admissions Priorities and Programs****Admissions Priorities**

1. Priority to students and residents of District 23
2. Then to students and residents of Brooklyn

Program Name	Code	Program Focus	Admissions Method	2014 Seats	2014 Applicants
<b>Mott Hall IV Middle School</b>	<b>K522S</b>	Math, Science & Technology	Screened	65	435
<b>Selection Criteria:</b> <ul style="list-style-type: none"> <li>• Diagnostic Test</li> <li>• Student Interview</li> </ul>					

Consistent with New York State law, State ELA and Mathematics test results will not be the sole, primary, or major factor in admissions decisions. Instead, multiple measures, which may include State test results, will be used to make admissions decisions for screened programs.

**Contact Information**

**Address:** 1137 Herkimer Street  
Brooklyn, NY 11233

**Phone:** 718-495-0863

**Fax:** 718-732-2129

**Email:** RMeade3@schools.nyc.gov

**Website:** www.Eagleny.org

**Subway:** A to Broadway Junction; C to Rockaway Ave; J, Z to Chauncey St

**Bus:** B12, B20, B25, B47, B60, B65, B7, Q24

**Supports for ELL and Students with Disabilities**

**Site Accessibility:** Not Accessible

**Special Education Services:** This school will provide students with disabilities the supports and services indicated on their IEPs.

**ELL Programs:** ESL

**School Life**

**Total Students (grades 6-8):** 287

**Grades (2015-2016):** 6-12

**Uniform/Dress Code Enforced:** Yes

**Academic Portfolio Required:** No

**Community Service Required:** Yes

**Extended Day Program Offered:** Yes

**Summer Session Offered:** No

**Weekend Program Offered:** No

**School Performance**

	What % of Middle School Students...						How Satisfied Are Students With the School?
	Passed English Class?	Passed Math Class?	Passed Social Studies Class?	Passed Science Class?	Were Proficient on the State English Test?	Were Proficient on the State Math Test?	
<b>This School's Performance in 2012-2013</b>	N/A	N/A	N/A	N/A	13%	6%	8.1
<b>Average for Similar Schools</b>	N/A	N/A	N/A	N/A	12%	9%	7.5

**Quality Review Score:** Proficient (2012-2013)

**About Our School**

Eagle Academy for Young Men II is an all-boys school committed to meeting the needs of our students and providing them with the required support services to sustain academic achievement and social growth. The development of our young men is supported through dedicated educators, supportive parents, and actively engaged mentors.

**Academic Opportunities**

**Regents Classes:** Integrated Algebra, Living Environment, U.S. History and Government

**Language Classes:** Spanish

**Extracurricular Activities and Clubs**

Mentoring Program, Accelerated Curriculum Opportunities, Debate Team, Trumpet and Guitar Academy, Martial Arts, Chess, Drama, Robotics Team

**Special Programs:** Mentoring, Student Government

**CHAMPS Sports – Boys:** Baseball, Basketball, Fencing, Football, Golf, Lacrosse, Tennis

**Admissions Priorities and Programs****Admissions Priorities**

1. All-Boys School
2. Priority to students and residents of Brooklyn who sign in at an event
3. Then to students and residents of Brooklyn

Program Name	Code	Program Focus	Admissions Method	2014 Seats	2014 Applicants
Eagle Academy for Young Men II	K644L	Humanities	Limited Unscreened	91	578

**Selection Criteria:** Students who apply to this program will be randomly selected within the priority groups listed above.

## Contact Information

**Address:** 226 Bristol Street  
Brooklyn, NY 11212

**Phone:** 718-498-2605

**Fax:** 718-345-8069

**Email:** tcooper6@teachersprep.org

**Website:** www.teachersprep.org

**Subway:** 3 to Rockaway Ave

**Bus:** B12, B14, B15, B60, B7

## Supports for ELL and Students with Disabilities

**Site Accessibility:** Functionally Accessible

**Special Education Services:** This school will provide students with disabilities the supports and services indicated on their IEPs.

**ELL Programs:** ESL

## School Life

**Total Students (grades 6-8):** 92

**Grades (2015-2016):** 6-12

**Uniform/Dress Code Enforced:** Yes; navy blue slacks or skirts with light blue collared shirts or blouses, navy blue cardigan or sweater. Males wear neck ties

**Academic Portfolio Required:** Yes; each student is required to maintain a portfolio for all core subject areas including art

**Community Service Required:** Yes

**Extended Day Program Offered:** Yes; Extended Day: Tuesday, Wednesday and Thursday, 2:40 – 3:30 PM

**Summer Session Offered:** Yes; Grade 8 Bridge Program: High School Readiness Program

**Weekend Program Offered:** Yes; Saturday Academy: seven week program, 8:30 AM – 12:00 PM, offered prior to NYS Assessments

## School Performance

	What % of Middle School Students...						How Satisfied Are Students With the School?
	Passed English Class?	Passed Math Class?	Passed Social Studies Class?	Passed Science Class?	Were Proficient on the State English Test?	Were Proficient on the State Math Test?	
<b>This School's Performance in 2012-2013</b>	86%	90%	90%	86%	12%	17%	6.7
<b>Average for Similar Schools</b>	84%	84%	84%	86%	19%	24%	7.4

**Quality Review Score:** Developing (2012-2013)

## About Our School

We are dedicated to creating an environment that fosters optimism, creativity, critical thinking, and lifelong learning. We will prepare tomorrow's educational leaders by modeling superior instruction in our teaching and by developing social efficacy skills through meaningful interactions with positive adult role models. Teachers maintain high expectations for student achievement and students understand and meet these expectations. Once admitted to our school, students may choose to participate in three programs. The Art Centered Program (ACP) is a program for motivated, academically sufficient students with an interest in all forms of the arts. The program focuses on specific areas: Visual Arts, Media, Dance, and Theater. Our Teach for Tomorrow program prepares students interested in teaching as a profession. Our students are trained to be teacher interns/tutors and our students are tutored by interns. Our EATS-Urban Farming program is sponsored by the Active Citizen Project. EATS students are engaged in creating healthy, affordable food choices in the community through developing neighborhood spaces into urban organic farms.

## Academic Opportunities

**Regents Classes:** Earth Science, Integrated Algebra

**Enrichment Classes:** Advisory, Council for Unity

## Extracurricular Activities and Clubs

Art & Music Club, Boys Study Hall & Arcade Club, Girls Leadership Club, Theater, T.P.S. Praise Dancers

**Special Programs:** Annual 3-Day Frost Valley Field Trip

**CHAMPS Sports – Boys:** Basketball

**CHAMPS Sports – Co-ed:** Dance, Double-Dutch, Fitness Club, Flag Football, Track & Field

# Admissions Priorities and Programs

## Admissions Priorities

1. Priority to students and residents of District 23
2. Then to students and residents of Brooklyn

Program Name	Code	Program Focus	Admissions Method	2014 Seats	2014 Applicants
Teachers Preparatory Secondary School	K697S	Interdisciplinary Studies	Screened	35	405
<b>Selection Criteria:</b> <ul style="list-style-type: none"> <li>• Diagnostic Test</li> <li>• Review of Attendance &amp; Punctuality</li> <li>• Review of Grades &amp; Test Scores</li> <li>• Student Interview</li> </ul>					

Consistent with New York State law, State ELA and Mathematics test results will not be the sole, primary, or major factor in admissions decisions. Instead, multiple measures, which may include State test results, will be used to make admissions decisions for screened programs.

## Contact Information

**Address:** 1300 Greene Avenue  
Brooklyn, NY 11237

**Phone:** 718-574-0390

**Fax:** 718-574-1366

**Email:** JSmith16@schools.nyc.gov

**Website:** www.philippaschuyler383.org

**Subway:** L to DeKalb Ave; M to Knickerbocker Ave

**Bus:** B13, B26, B38, B52, B54, B60, Q58

## Supports for ELL and Students with Disabilities

**Site Accessibility:** Functionally Accessible

**Special Education Services:** This school will provide students with disabilities the supports and services indicated on their IEPs.

**ELL Programs:** ESL

## School Life

**Total Students (grades 6-8):** 833

**Grades (2015-2016):** 5-8

**Uniform/Dress Code Enforced:** Yes

**Academic Portfolio Required:** Yes

**Community Service Required:** No

**Extended Day Program Offered:** Yes; includes academic intervention and enrichment programs. Performing arts extended day includes dance, rock band, chorus, and theater.

**Summer Session Offered:** No

**Weekend Program Offered:** Yes; partnership with Jazz at Lincoln Center, boys basketball

## School Performance

	What % of Middle School Students...						How Satisfied Are Students With the School?
	Passed English Class?	Passed Math Class?	Passed Social Studies Class?	Passed Science Class?	Were Proficient on the State English Test?	Were Proficient on the State Math Test?	
<b>This School's Performance in 2012-2013</b>	99%	97%	97%	94%	46%	31%	7.4
<b>Average for Similar Schools</b>	97%	97%	97%	97%	57%	58%	7.7

**Quality Review Score:** Proficient (2012-2013)

## About Our School

Students receive instructional programs that meet their individual gifts and talents. Philippa Schuyler offers a variety of acceleration and enrichment opportunities that include advanced language arts and math classes, single-subject acceleration, special magnet programs, Regents courses, and Specialized High Schools Admissions Test preparation courses. Students in Major Drama have performed their original plays on Broadway via Fidelity FutureStage.

## Academic Opportunities

**Regents Classes:** Earth Science, Integrated Algebra, Living Environment, Spanish

**Enrichment Classes:** Robotics, Technology, Law, Partnership with Arthur Ashe Science Foundation, New York Historical Society, Fidelity Future Stages Partnership

**Language Classes:** French, Spanish

## Extracurricular Activities and Clubs

International Trips, CHAMPS Fitness Program, Lego Robotic League, Chess Club, Recycling Team, New York Junior Tennis League, Kaplan Specialized High School Preparation Course

**Special Programs:** Science Fair, Social Studies Fair, Winter and Spring Performing Arts Concert, Student Government, National Junior Honor Society (NJHS), National Junior Beta Club

**CHAMPS Sports – Boys:** Basketball, Flag Football

**CHAMPS Sports – Girls:** Basketball, Cheerleading, Double-Dutch

**CHAMPS Sports – Co-ed:** Tennis, Yoga

# Admissions Priorities and Programs

## Admissions Priorities

1. Priority to continuing 5th grade students
2. Then to students and residents of Brooklyn and Queens

Program Name	Code	Program Focus	Admissions Method	2014 Seats	2014 Applicants
<b>Philippa Schuyler (J.H.S. 383)</b>	<b>K383M</b>	Humanities	Screened	370	3273
<b>Selection Criteria:</b> <ul style="list-style-type: none"> <li>• Review of Attendance &amp; Punctuality</li> <li>• Review of Grades &amp; Test Scores</li> <li>• Student Interview</li> <li>• Teacher Recommendation</li> </ul>					

*Consistent with New York State law, State ELA and Mathematics test results will not be the sole, primary, or major factor in admissions decisions. Instead, multiple measures, which may include State test results, will be used to make admissions decisions for screened programs.*

# **Citywide Schools**

All New York City residents may apply  
to the schools listed on the following pages.

## Contact Information

**Address:** 111 Columbia Street  
New York, NY 10002

**Phone:** 212-677-5190

**Fax:** 212-260-8124

**Email:** BAlfier@schools.nyc.gov

**Website:** www.nestmk12.net

**Subway:** F, J, M, Z to Delancey St-Essex St

**Bus:** B39, M14A, M14D, M21, M22, M8, M9

## Supports for ELL and Students with Disabilities

**Site Accessibility:** Not Accessible

**Special Education Services:** This school will provide students with disabilities the supports and services indicated on their IEPs.

**ELL Programs:** ESL

## School Life

**Total Students (grades 6-8):** 428

**Grades (2015-2016):** K-12

**Uniform/Dress Code Enforced:** Yes; polo or button-down shirt school logo solid color pants or skirts

**Academic Portfolio Required:** No

**Community Service Required:** No

**Extended Day Program Offered:** No

**Summer Session Offered:** Yes

**Weekend Program Offered:** No

## School Performance

	What % of Middle School Students...						How Satisfied Are Students With the School?
	Passed English Class?	Passed Math Class?	Passed Social Studies Class?	Passed Science Class?	Were Proficient on the State English Test?	Were Proficient on the State Math Test?	
<b>This School's Performance in 2012-2013</b>	99%	99%	100%	92%	94%	93%	7.6
<b>Average for Similar Schools</b>	97%	97%	98%	97%	54%	57%	8

**Quality Review Score:** Proficient (2010-2011)

## About Our School

We are a K-12 citywide school located in District 1 on the Lower East Side of Manhattan. Our middle school has academic and enrichment courses such as world languages, robotics, and chess, and a Science Olympiad will soon complement our rigorous academic program.

## Academic Opportunities

**Regents Classes:** Earth Science, French, Geometry, German, Integrated Algebra, Latin, Living Environment, Physics, Spanish, U.S. History and Government

**Enrichment Classes:** Music (with annual concerts), Studio Art (with annual exhibits), Literacy/Theater class (with theater productions), Winter and Spring Concerts, Art Shows

**Language Classes:** Chinese (Mandarin)

## Extracurricular Activities and Clubs

**Special Programs:** Day trip to Philadelphia, Overnight trip to Washington D.C., Math Competitions, Chess Competitions, Student Space Flight Experiment Program, Student Press Initiatives

**CHAMPS Sports – Boys:** Baseball, Soccer, Softball, Track & Field, Volleyball

**CHAMPS Sports – Girls:** Soccer, Softball, Track & Field, Volleyball

**CHAMPS Sports – Co-ed:** Basketball, Table Tennis

This school has a school-based application process.  
Please contact the school for information about how to apply.

## Contact Information

**Address:** 345 East 15th Street  
New York, NY 10003

**Phone:** 212-475-7972

**Fax:** 212-475-0459

**Email:** iceadmissions@gmail.com

**Website:** www.iceschool.net

**Subway:** 4, 5, 6, N, Q, R to 14th St-Union Square; L to 1st Ave

**Bus:** M101, M102, M103, M14A, M14D, M15, M15-SBS, M2, M23, M3, M34A-SBS, M8, M9

## Supports for ELL and Students with Disabilities

**Site Accessibility:** Functionally Accessible

**Special Education Services:** This school will provide students with disabilities the supports and services indicated on their IEPs.

**ELL Programs:** ESL

## School Life

**Total Students (grades 6-8):** 201

**Grades (2015-2016):** 6-12

**Uniform/Dress Code Enforced:** No

**Academic Portfolio Required:** Yes; students are assessed by completing long-term projects in all core disciplines.

**Community Service Required:** No

**Extended Day Program Offered:** Yes; teachers work with students after school and can be supervised until after 5 PM.

**Summer Session Offered:** Yes; summer school every July and August

**Weekend Program Offered:** No

## School Performance

	What % of Middle School Students...						How Satisfied Are Students With the School?
	Passed English Class?	Passed Math Class?	Passed Social Studies Class?	Passed Science Class?	Were Proficient on the State English Test?	Were Proficient on the State Math Test?	
<b>This School's Performance in 2012-2013</b>	100%	100%	100%	100%	63%	52%	8.2
<b>Average for Similar Schools</b>	98%	97%	97%	97%	64%	63%	7.8

**Quality Review Score:** Well Developed (2012-2013)

## About Our School

The Institute for Collaborative Education (I.C.E.) is a small, community-focused school where the needs and academic interests of our students come first. Teachers utilize a project-based curriculum that emphasizes student-centered inquiry, forming substantive arguments, written and oral presentations, and the active and ongoing exchange of ideas. At I.C.E. we encourage students to develop their own points of view and practice the intellectual disciplines of conducting formal research and defending complex academic arguments.

## Academic Opportunities

**Enrichment Classes:** Visual Art, Music (Jazz Band and Section Rehearsals), Photography, Dance, Multimedia Production, Drama and Theatre, Shakespeare Literature, Debate

**Language Classes:** Spanish

## Extracurricular Activities and Clubs

Debate, Table Tennis, Literary Magazine, Coffee House, Robotics, Japanese Club, Science Club, Fencing

**Special Programs:** Senior Internship, Neuroscience Exhibition and NYSEF preparation, SAT preparation, International Educational Travel (including trips to Lesotho and Mexico), Gay/Straight Alliance

**CHAMPS Sports – Boys:** Baseball, Basketball, Flag Football, Soccer, Track & Field

**CHAMPS Sports – Girls:** Basketball, Soccer, Softball, Track & Field

**CHAMPS Sports – Co-ed:** Track & Field

This school has a school-based application process.  
Please contact the school for information about how to apply.



**Contact Information**

**Address:** 328 West 48th Street  
New York, NY 10036

**Phone:** 212-247-8652

**Fax:** 212-247-7514

**Email:** admissions@ppasshare.org

**Website:** ppasnyc.org

**Subway:** 1, C, E to 50th St; 2, 3, 7, G, S to Times Square-42nd St; A to 42nd St-Port Authority Bus Terminal; B, D to 7th Ave; F, M to 47-50th Sts Rockefeller Center; N, Q, R to 49th St

**Bus:** M10, M104, M11, M20, M31, M34A-SBS, M42, M50, M57, M7

**Supports for ELL and Students with Disabilities**

**Site Accessibility:** Not Accessible

**Special Education Services:** This school will provide students with disabilities the supports and services indicated on their IEPs.

**ELL Programs:** ESL

**School Life**

**Total Students (grades 6-8):** 95

**Grades (2015-2016):** 6-12

**Uniform/Dress Code Enforced:** No

**Academic Portfolio Required:** Yes

**Community Service Required:** Yes

**Extended Day Program Offered:** Yes

**Summer Session Offered:** No

**Weekend Program Offered:** No

**School Performance**

	What % of Middle School Students...						How Satisfied Are Students With the School?
	Passed English Class?	Passed Math Class?	Passed Social Studies Class?	Passed Science Class?	Were Proficient on the State English Test?	Were Proficient on the State Math Test?	
<b>This School's Performance in 2012-2013</b>	99%	98%	99%	100%	84%	52%	7.2
<b>Average for Similar Schools</b>	98%	97%	97%	97%	66%	65%	7.8

**Quality Review Score:** Proficient (2009-2010)

**About Our School**

Located in the heart of Manhattan's Theater District, the Professional Performing Arts School (PPAS) is a small, personalized school that partners with top-rated New York City arts organizations to provide the highest quality training in the performing arts and a competitive academic program. In partnership with professional theater company Waterwell, middle school students receive 90 minutes daily of acting, dance, and voice classes, in addition to a full academic course load. The arts program emphasizes rigor and discipline alongside curiosity, generosity, and an orientation toward others. Our curriculum provides students with the artistic and personal skills to be leaders in the field, their community, and in whatever profession they choose to pursue. Our academic and arts programs prepare students for competitive high schools. Students have a wide choice of options when transitioning to high school. PPAS middle school students are guaranteed a placement in one of the PPAS high school arts programs if they choose to stay. Although keenly focused on performing arts education, we provide a middle school experience that is well-rounded and considers every child's interests, learning styles, and needs. Our central goal is to offer a rich, engaging, and fun middle school program that will support the ultimate goal of school, college, and career success. Students invited for an audition prepare one short monologue and one song to perform without music. The monologue can be from a play, a movie, or something a student has written. Students should choose characters close to their age and/or life experience. Students are asked to show us their range and know who they are talking to in their imagination and why. The song should be classical, gospel, or from a musical. Although it can help, students do not need prior experience in order to apply.

**Academic Opportunities**

**Regents Classes:** Earth Science, Integrated Algebra

**Enrichment Classes:** Creative Writing and Independent Reading Program (IRP)

**Language Classes:** Spanish

**Extracurricular Activities and Clubs**

Debate, Middle School Musical, Student Council, Environmental Advocacy Club

**Special Programs:** Now applying for after-school program.

**Admissions Priorities and Programs****Admissions Priorities**

1. Open to New York City residents

Program Name	Code	Program Focus	Admissions Method	2014 Seats	2014 Applicants
Professional Performing Arts School	M408M	Performing Arts	Screened	New Program	New Program
<b>Selection Criteria:</b> <ul style="list-style-type: none"> <li>• Audition</li> <li>• Review of Attendance &amp; Punctuality</li> <li>• Review of Grades &amp; Test Scores</li> </ul>					

*Consistent with New York State law, State ELA and Mathematics test results will not be the sole, primary, or major factor in admissions decisions. Instead, multiple measures, which may include State test results, will be used to make admissions decisions for screened programs.*

Please see page 52 for more information about auditioning for Professional Performing Arts School.



## Contact Information

**Address:** 890 Broadway  
New York, NY 10003

**Phone:** 212-254-1803

**Fax:** 212-477-5048

**Email:** schoolinfo@ballettech.org

**Website:** www.ballettechschool.org

**Subway:** 1, 2, 3, F, M to 14th St - 6th Ave; 4, 5, L, Q to 14th St-Union Square; 6, N, R to 23rd St

**Bus:** M101, M102, M14A, M14D, M15, M2, M23, M34A-SBS, M5, M7

## Supports for ELL and Students with Disabilities

**Site Accessibility:** Functionally Accessible

**Special Education Services:** This school will provide students with disabilities the supports and services indicated on their IEPs.

**ELL Programs:** ESL

## School Life

**Total Students (grades 6-8):** 69

**Grades (2015-2016):** 4-8

**Uniform/Dress Code Enforced:** No

**Academic Portfolio Required:** No

**Community Service Required:** No

**Extended Day Program Offered:** Yes; "Roads to Success", a non-profit organization, provides an after-school enrichment program.

**Summer Session Offered:** Yes; the Summer Session is a ballet program and an academic program.

**Weekend Program Offered:** No

## School Performance

	What % of Middle School Students...						How Satisfied Are Students With the School?
	Passed English Class?	Passed Math Class?	Passed Social Studies Class?	Passed Science Class?	Were Proficient on the State English Test?	Were Proficient on the State Math Test?	
<b>This School's Performance in 2012-2013</b>	100%	100%	99%	100%	53%	74%	8.2
<b>Average for Similar Schools</b>	90%	90%	91%	91%	47%	51%	8

**Quality Review Score:** Proficient (2009-2010)

## About Our School

Ballet Tech integrates intensive dance training with a full academic curriculum for approximately 150 students in grades 4-8. The middle school dance curriculum, provided on-site by the Ballet Tech Foundation, includes daily classes in ballet technique as well as pointe, modern, character, gymnastics, and repertory choreographed by founder Eliot Feld specifically for these young dancers.

## Academic Opportunities

**Enrichment Classes:** Dance, Visual Art

**Language Classes:** Spanish

## Extracurricular Activities and Clubs

Spirit Committee

**Special Programs:** KIDS DANCE (pre-professional student dance troupe)

This school has a school-based application process.  
Please contact the school for information about how to apply.

## Contact Information

**Address:** 100 West 77th Street  
New York, NY 10024

**Phone:** 212-595-7193

**Fax:** 212-496-2854

**Email:** dsmiley@schools.nyc.gov

**Website:** www.ps334anderson.org

**Subway:** 1 to 79th St; 2, 3 to 72nd St; B, C to 81st St

**Bus:** M10, M104, M11, M5, M57, M7, M72, M79, M86

## Supports for ELL and Students with Disabilities

**Site Accessibility:** Functionally Accessible

**Special Education Services:** This school will provide students with disabilities the supports and services indicated on their IEPs.

**ELL Programs:** ESL

## School Life

**Total Students (grades 6-8):** 192

**Grades (2015-2016):** K-8

**Uniform/Dress Code Enforced:** No

**Academic Portfolio Required:** No

**Community Service Required:** Yes; hours must be documented.

**Extended Day Program Offered:** Yes; students are selected by the school.

**Summer Session Offered:** No

**Weekend Program Offered:** No

## School Performance

	What % of Middle School Students...						How Satisfied Are Students With the School?
	Passed English Class?	Passed Math Class?	Passed Social Studies Class?	Passed Science Class?	Were Proficient on the State English Test?	Were Proficient on the State Math Test?	
<b>This School's Performance in 2012-2013</b>	100%	100%	100%	100%	95%	99%	8.9
<b>Average for Similar Schools</b>	97%	97%	98%	97%	54%	57%	8

**Quality Review Score:** Well Developed (2009-2010)

## About Our School

The Anderson Middle School (AMS) provides a judicious combination of an accelerated and enriched curriculum for the distinct needs of gifted learners. Our upper grades are fully integrated within our highly successful K-8 school. With only two classes per grade, the relationship between students and teachers is very personal and supportive. This smaller population also fosters a strong sense of community for students who attend this citywide school. Guided by skilled educators who recognize the special needs of children with outstanding intellectual potential, our upper grades, 6-8, provide intimate, differentiated, and departmentalized instruction that encourages higher level critical thinking skills, creative problem solving, divergent thinking, research, independent study, collaborative projects, and self-evaluation. The legacy of parental involvement and support sustains the spirit and growth of AMS. The Anderson School seeks a diverse student population and welcomes applications from students living in any of the five boroughs who meet the criteria of high academic performance based on report cards, very high scores on each of the 4th grade NYS ELA and Math exams (scores to be announced on school's website in November), and strong teacher recommendations. Students who meet all of these criteria will participate in an admissions test at the school that includes essay writing and a math assessment given by members of the Anderson administration and faculty.

## Academic Opportunities

**Regents Classes:** Integrated Algebra, Living Environment, Spanish

**Enrichment Classes:** Art (Studio and History), Music (Keyboard Lab, History, Instrumental Music, Chorus), Advisory, Technology/Research Lab, Electives, Musical Theater, Ballroom Dancing

**Language Classes:** Spanish

## Extracurricular Activities and Clubs

Bridge, Chess Team, Debate Team, Math Team, Musical Theater, Science Olympiad, Student Council, Yearbook/School Newspaper

**Special Programs:** Overnight trips to Camp Speers, Boston, Washington DC; Teaching assistants in each core subject classroom; Community service requirement; Participation in national competitions (Wordmasters, National Geographic Bee, Scripps Spelling Bee); Math competitions

**CHAMPS Sports – Boys:** Basketball, Lacrosse, Soccer

**CHAMPS Sports – Girls:** Basketball, Lacrosse, Soccer, Volleyball

**CHAMPS Sports – Co-ed:** Baseball, Flag Football, Table Tennis, Tennis, Track & Field

This school has a school-based application process.  
Please contact the school for information about how to apply.

**Contact Information**

**Address:** 129 West 67th Street  
New York, NY 10023

**Phone:** 212-501-3318

**Fax:** 212-501-3339

**Email:** smsa@kaufmanmusiccenter.org

**Website:** www.kaufmanmusiccenter.org/sms

**Subway:** 1 to 66th St - Lincoln Center; 2, 3, B, C to 72nd St; A, D to 59th St-Columbus Circle

**Bus:** M10, M104, M11, M20, M5, M57, M66, M7, M72

**Supports for ELL and Students with Disabilities**

**Site Accessibility:** Not Accessible

**Special Education Services:** This school will provide students with disabilities the supports and services indicated on their IEPs.

**ELL Programs:** ESL

**School Life**

**Total Students (grades 6-8):** 50

**Grades (2015-2016):** K-11

**Final Expected Grade Configuration:** K-12

**Uniform/Dress Code Enforced:** No

**Academic Portfolio Required:** No

**Community Service Required:** Yes; community service concert

**Extended Day Program Offered:** Yes; extra tutoring

**Summer Session Offered:** No

**Weekend Program Offered:** No

**School Performance**

	What % of Middle School Students...						How Satisfied Are Students With the School?
	Passed English Class?	Passed Math Class?	Passed Social Studies Class?	Passed Science Class?	Were Proficient on the State English Test?	Were Proficient on the State Math Test?	
<b>This School's Performance in 2012-2013</b>	100%	100%	100%	100%	92%	90%	8.7
<b>Average for Similar Schools</b>	97%	97%	98%	97%	54%	56%	8

**Quality Review Score:** Well Developed (2011-2012)

**About Our School**

The mission of the Special Music School is to provide schooling to musically gifted children through a combination of highly structured instrumental training and a standards-based academic program. The school prepares musically gifted children for professional music careers while recognizing that not every student will choose such a career. The underlying philosophy informing the structure and operation of the Special Music School is the belief that music education for gifted pupils requires: 1) extensive opportunities to work with an outstanding instrumental faculty on a one-to-one basis; 2) a structured, sequential music curriculum; 3) opportunities to perform before audiences; and 4) a program of close interaction between general academic and musical studies. It is our goal to see each child reach his or her maximum academic and musical potential. Our vision is that all Special Music School students will become life-long learners and critical thinkers in the context of a caring and respectful learning environment. We encourage meaningful parental involvement in all aspects of the educational process, fully recognizing the importance of the home/school partnership as an essential component for maximizing each child's growth and development.

**Academic Opportunities**

**Regents Classes:** Integrated Algebra

**Enrichment Classes:** Music Theory, Music History, Chorus, Visual Arts, Physical Education, Advisory

**Language Classes:** Spanish

**Extracurricular Activities and Clubs**

Student Council, Advisory, Face the Music (Contemporary Music Ensemble), Instrumental Ensembles, Launch Math After-School Program

This school has a school-based application process.  
Please contact the school for information about how to apply.

### Contact Information

**Address:** 240 East 109th Street  
New York, NY 10029

**Phone:** 212-860-6003

**Fax:** 212-831-1842

**Email:** mbruno3@schools.nyc.gov

**Website:** www.tagscholars.com

**Subway:** 6 to 110th St

**Bus:** M1, M101, M102, M106, M116, M15, M15-SBS, M2, M3

### Supports for ELL and Students with Disabilities

**Site Accessibility:** Functionally Accessible

**Special Education Services:** This school will provide students with disabilities the supports and services indicated on their IEPs.

**ELL Programs:** ESL

### School Life

**Total Students (grades 6-8):** 159

**Grades (2015-2016):** K-8

**Uniform/Dress Code Enforced:** Yes; boys: navy pants, white shirt, tie, shoes; girls: navy skirt or pants, white shirt, tie, and shoes, optional navy sweater; gym uniform: red shorts or sweats, white t-shirt

**Academic Portfolio Required:** No

**Community Service Required:** Yes; 6th grade: 25 Hours, 7th grade: 45 hours, 8th grade: 55 hours

**Extended Day Program Offered:** No

**Summer Session Offered:** No

**Weekend Program Offered:** No

### School Performance

	What % of Middle School Students...						How Satisfied Are Students With the School?
	Passed English Class?	Passed Math Class?	Passed Social Studies Class?	Passed Science Class?	Were Proficient on the State English Test?	Were Proficient on the State Math Test?	
<b>This School's Performance in 2012-2013</b>	98%	92%	90%	88%	72%	72%	8.2
<b>Average for Similar Schools</b>	88%	88%	89%	89%	41%	46%	7.8

**Quality Review Score:** Proficient (2010-2011)

### About Our School

At the Talented and Gifted School for Young Scholars, faculty, parents, and students work together to prepare all students to excel in life and develop to their full potential, both intellectually and socially. As part of a collaborative effort we seek to: inspire inquiry, creativity, and achievement for all of our students; inspire compassion, integrity, and respect for all humanity; and cultivate the belief that we are all life-long learners. Believing in the dignity and worth of each individual, whether adult or child, we recognize our responsibility to provide an educational program that stimulates and challenges each person to realize his/her maximum potential. Through this collaborative effort, we will: promote physical and emotional well-being; recognize and develop, in all students, their individual interests and talents; provide a strong educational program in which all students are encouraged to develop critical and creative thinking skills; design meaningful educational experiences that promote academic and personal growth and challenge students to reach their full potential; select, develop, and maintain a professional and supportive staff sensitive to the instructional and emotional needs of each student, dedicated to providing a quality education, and who have a genuine love of children and an interest in helping the students we are fortunate to serve develop into positive members of our society; engage in ongoing self-evaluation that ensures, as an educational learning community, that we are effectively working to achieve our own goals and those of the Department of Education.

### Academic Opportunities

**Regents Classes:** Integrated Algebra, Living Environment, U.S. History and Government

**Enrichment Classes:** Art through 6th grade, Technology (programming and robotics)

**Language Classes:** Spanish

### Extracurricular Activities and Clubs

Debate Team, Girls Volleyball Club, Glee Club, Latin, Latin Jazz Ensemble, Robotics, Video Broadcasting

**Special Programs:** Project Boost, Field Trips Museums, Libraries and Randall's Island

**CHAMPS Sports – Girls:** Volleyball

This school has a school-based application process.  
Please contact the school for information about how to apply.

## Contact Information

**Address:** 50 Avenue P  
Brooklyn, NY 11204

**Phone:** 718-621-5730

**Fax:** 718-621-5735

**Email:** dtaylor32@schools.nyc.gov

**Website:** www.bsi686.org

**Subway:** N to Kings Highway

**Bus:** B4, B6, B82

## Supports for ELL and Students with Disabilities

**Site Accessibility:** Functionally Accessible

**Special Education Services:** This school will provide students with disabilities the supports and services indicated on their IEPs.

**ELL Programs:** ESL

## School Life

**Total Students (grades 6-8):** N/A

**Grades (2015-2016):** K-7

**Final Expected Grade Configuration:** K-8

**Uniform/Dress Code Enforced:** No

**Academic Portfolio Required:** Yes; applicants to BSI will provide a student portfolio consisting of one piece of writing including early drafts and rubric with teacher feedback

**Community Service Required:** No

**Extended Day Program Offered:** Yes; two mornings each week, students are able to come for zero period to meet with any of their content teachers to review material, ask questions, and seek guidance on projects

**Summer Session Offered:** No

**Weekend Program Offered:** No

## School Performance

	What % of Middle School Students...						How Satisfied Are Students With the School?
	Passed English Class?	Passed Math Class?	Passed Social Studies Class?	Passed Science Class?	Were Proficient on the State English Test?	Were Proficient on the State Math Test?	
<b>This School's Performance in 2012-2013</b>	N/A	N/A	N/A	N/A	N/A	N/A	N/A
<b>Average for Similar Schools</b>	N/A	N/A	N/A	N/A	N/A	N/A	N/A

**Quality Review Score:** Proficient (2011-2012)

## About Our School

At BSI, we encourage our students to become self-directed learners who think of themselves as active members of the world community. We offer an arts-enriched school environment that promotes creativity and divergent thinking. We want our students to see themselves as mathematicians, so we foster deep comprehension of math concepts by helping our students acquire habits of mind: persisting, questioning, communicating with precision and clarity, thinking flexibly, meta-cognition (thinking about one's thinking), listening with understanding/empathy, and thinking interdependently. BSI students read short stories, novels, graphic novels, poetry, classic works of literature, and contemporary authors. They thrive on diverse content and their writing includes feature articles, informational texts, comic books, interviews, persuasive essays, literary analysis, and literary criticism. We teach our students to engage technology, to think critically about what they see, and to be thoughtful about how they use technology to express their thoughts and ideas. Parents play a crucial role in both the daily life and long-term growth of BSI: through a vital home/school connection we build a learning community based on respect and cooperation. What begins in the early grades as learning community agreements becomes, in later grades, the teaching of rights and responsibilities through the Responsive Classroom model.

## Academic Opportunities

**Regents Classes:** Earth Science, Latin, Living Environment, U.S. History and Government

**Enrichment Classes:** SPARC (Special Projects and Real Connections), Dance, Drama/Theater, Music, Band, Orchestra

**Language Classes:** Latin

## Extracurricular Activities and Clubs

Photography, Videography, Sculpture, Painting, Chorus, Woodworking, Yearbook, School Newspaper, Robotics, Co-ed Intramural Sports

**Special Programs:** Field Trips, Internships, Community Service Projects, STEM activities

**CHAMPS Sports – Boys:** Basketball, Dance, Soccer

**CHAMPS Sports – Girls:** Basketball, Dance, Soccer

**CHAMPS Sports – Co-ed:** Basketball, Dance, Soccer

# Admissions Priorities and Programs

## Admissions Priorities

1. Priority to continuing 5th grade students
2. Then to New York City residents

Program Name	Code	Program Focus	Admissions Method	2014 Seats	2014 Applicants
Brooklyn School of Inquiry	K686M	Arts-Enriched Gifted & Talented Program	Screened	66	3164
<b>Selection Criteria:</b> <ul style="list-style-type: none"> <li>• On-site Assessment</li> <li>• Review of Grades, Test Scores, and Attendance</li> <li>• Student Writing Sample</li> </ul>					

*Consistent with New York State law, State ELA and Mathematics test results will not be the sole, primary, or major factor in admissions decisions. Instead, multiple measures, which may include State test results, will be used to make admissions decisions for screened programs.*

### Contact Information

**Address:** 2401 Neptune Avenue  
Brooklyn, NY 11224

**Phone:** 718-266-0814

**Fax:** 718-266-1693

**Email:** prubin3@schools.nyc.gov

**Website:** http://is239.schoolwires.com

**Subway:** N/A

**Bus:** B36, B74, B82

### Supports for ELL and Students with Disabilities

**Site Accessibility:** Not Accessible

**Special Education Services:** This school will provide students with disabilities the supports and services indicated on their IEPs.

**ELL Programs:** ESL

### School Life

**Total Students (grades 6-8):** 1312

**Grades (2015-2016):** 6-8

**Uniform/Dress Code Enforced:** No

**Academic Portfolio Required:** No

**Community Service Required:** No

**Extended Day Program Offered:** No

**Summer Session Offered:** No

**Weekend Program Offered:** No

### School Performance

	What % of Middle School Students...						How Satisfied Are Students With the School?
	Passed English Class?	Passed Math Class?	Passed Social Studies Class?	Passed Science Class?	Were Proficient on the State English Test?	Were Proficient on the State Math Test?	
<b>This School's Performance in 2012-2013</b>	99%	99%	99%	99%	81%	80%	7.8
<b>Average for Similar Schools</b>	98%	97%	97%	97%	66%	65%	7.8

**Quality Review Score:** Well Developed (2007-2008)

### About Our School

Students thrive in our community that blends academic rigor with visual and performing arts. Every student has a focus in one of our Talent programs: Art, Athletics, Computer/Math, Creative Writing/Journalism, Dance, Drama, Instrumental Music (Strings or Winds), Media, Science, or Vocal Music. Parents appreciate the personalized attention of our mini-school "cluster" system. Teachers and support staff have time in their weekly schedule to collaborate with parents and caregivers to provide the best academic and social/emotional development for each student. Almost all graduates go on to NYC's Specialized High Schools or select programs. We have building-wide Next Generation Wireless internet access and cohorts of students utilize iPads throughout their courses. Our school is designated as a Rewards School (top 5% by NYSED). We received The Blackboard Award for "Outstanding Middle School" in 2011.

### Academic Opportunities

**Regents Classes:** Earth Science, Integrated Algebra, Living Environment

**Enrichment Classes:** Music, Art, Technology, Robotics, Computer Science, Leadership

**Language Classes:** Italian, Spanish

### Extracurricular Activities and Clubs

LEAP arts internships, HAI after-school arts program, Social Awareness Club, Book Club, Young Naturalists, Tech Club, Math Team, Chess, New York Stock Market Game, Audio Visual Squad, Yearbook, School Newspaper, Eureka Project, Art Publications, Off-Site Art and Music Exhibitions, Film Production, Robotics Team

**Special Programs:** Our school has been working on enhancing STEM opportunities. We are one of 20 schools selected to participate in the software engineering pilot program by the Mayor's Office and are part of the STEM Pipeline program in partnership with National Grid and Brooklyn Technical High School. In addition, we offer Specialized High School preparation, talent programs, Arista/National Junior Honor Society (NJHS), leadership, community service, and activism opportunities.

**CHAMPS Sports – Boys:** Basketball, Soccer, Volleyball

**CHAMPS Sports – Girls:** Basketball, Soccer, Volleyball

**CHAMPS Sports – Co-ed:** Bowling

## Admissions Priorities and Programs

### Admissions Priorities

1. Open to New York City residents

Program Name	Code	Program Focus	Admissions Method	2014 Seats	2014 Applicants
Mark Twain for the Gifted & Talented (I.S. 239)	See Page 52	Talent Areas	Test	456	7820
<b>Selection Criteria:</b> For more information about how to apply to Mark Twain for the Gifted & Talented (I.S. 239), please review page 52 carefully.					



**Contact Information**

**Address:** 31-51 21st Street  
Astoria, NY 11106

**Phone:** 718-935-3608

**Fax:** N/A

**Email:** 30thaveschool@gmail.com

**Website:** <http://schools.nyc.gov/SchoolPortals/30/Q300>

**Subway:** N, Q to Broadway

**Bus:** Q100, Q102, Q103, Q104, Q18, Q19, Q66, Q69

**Supports for ELL and Students with Disabilities**

**Site Accessibility:** Not Accessible

**Special Education Services:** This school will provide students with disabilities the supports and services indicated on their IEPs.

**ELL Programs:** ESL

**School Life**

**Total Students (grades 6-8):** N/A

**Grades (2015-2016):** K-7

**Final Expected Grade Configuration:** K-8

**Uniform/Dress Code Enforced:** Yes; school polo shirt and navy pants/skirt, school patch and khaki pants

**Academic Portfolio Required:** No

**Community Service Required:** No

**Extended Day Program Offered:** No

**Summer Session Offered:** No

**Weekend Program Offered:** No

**School Performance**

	What % of Middle School Students...						How Satisfied Are Students With the School?
	Passed English Class?	Passed Math Class?	Passed Social Studies Class?	Passed Science Class?	Were Proficient on the State English Test?	Were Proficient on the State Math Test?	
<b>This School's Performance in 2012-2013</b>	N/A	N/A	N/A	N/A	N/A	N/A	N/A
<b>Average for Similar Schools</b>	N/A	N/A	N/A	N/A	N/A	N/A	N/A

**Quality Review Score:** N/A

**About Our School**

Those who are successful in modern workplaces know how to ask the right questions – they are critical thinkers and researchers, strong problem solvers, and reflective practitioners. At 30th Avenue School, students have daily opportunities to develop these skills and habits through inquiry-based lessons and projects. Teachers facilitate learning by setting up the classroom in specific ways, intervening when necessary, observing students, asking thoughtful questions, and assessing student learning. For example, in a sixth grade science classroom, a visitor will see students working independently and in groups to answer the question, “How does temperature impact the speed of molecules?” Students will build models of molecules, devise their own experiments, and perform internet research on energy. 30th Avenue School differentiates itself from other Citywide Gifted & Talented schools by challenging students to develop skills in all core subjects, as well as in engineering, programming, arts, and world languages. Students at 30th Avenue School receive a well-rounded education that will prepare them for competitive high schools and beyond.

**Academic Opportunities**

**Regents Classes:** Earth Science, Integrated Algebra, Living Environment, Spanish

**Language Classes:** Chinese (Mandarin), Spanish

**Extracurricular Activities and Clubs**

**Special Programs:** Robotics, Programming

**CHAMPS Sports – Boys:** Will be based on student interest

**CHAMPS Sports – Girls:** Will be based on student interest

**CHAMPS Sports – Co-ed:** Will be based on student interest

**Admissions Priorities and Programs****Admissions Priorities**

1. Priority to students in the P.S. 85 Gifted & Talented program
2. Then to NYC residents

Program Name	Code	Program Focus	Admissions Method	2014 Seats	2014 Applicants
<b>30th Avenue School</b>	<b>Q300M</b>	STEM-Enriched Gifted & Talented Program	Screened	60	1459
<b>Selection Criteria:</b> Students will be selected based on multiple criteria which may include a review of grades, test scores, attendance, and student work habits.					

*Consistent with New York State law, State ELA and Mathematics test results will not be the sole, primary, or major factor in admissions decisions. Instead, multiple measures, which may include State test results, will be used to make admissions decisions for screened programs.*

## How to Apply to Mark Twain for the Gifted & Talented (21K239)

Mark Twain for the Gifted & Talented (I.S. 239) is a middle school open to all New York City residents. In order to be eligible to test for and apply to this school, applicants must submit a Request for Testing (RFT) form by the deadline and follow the other admissions requirements outlined below.

**Request for Testing (RFT) Information:** All students interested in applying to Mark Twain for the Gifted & Talented must submit a Request for Testing (RFT) form **by October 9, 2014**.

Public school students should return the form to their elementary school, and non-public school students should return the form to their local enrollment office (see back inside cover). On the RFT form, you will need to identify the two talent areas (see below) for which you would like your child to participate in competitive talent exams.

### Talent Areas and Program Codes

- Art (K239AR)
- Athletics (K239AT)
- Computer/Math (K239CM)
- Creative Writing/Journalism (K239JO)
- Dance (K239DA)
- Drama (K239DR)
- Instrumental – Strings (K239ST)
- Instrumental – Winds (K239WI)
- Media (K239ME)
- Science (K239SC)
- Vocal Music (K239VO)

**Ranking Mark Twain on the Middle School Application:** Students who have submitted their RFT form will see the two talent areas for which they have requested to be tested on their personalized middle school application. To be considered for placement, you must also rank Mark Twain on your application as one of your choices.

**Talent Testing/Audition Information:** After submitting the RFT Form, eligible students will receive notification of the date for which they have been scheduled to audition. Testing will occur at Mark Twain and will take place on one of the dates listed below:

- January 10, 2015
- January 11, 2015
- January 24, 2015
- January 25, 2015
- January 31, 2015
- February 1, 2015
- February 7, 2015
- February 8, 2015

Please note that additional test dates may be scheduled based on student applicant response.

---

## How to Apply to Professional Performing Arts School (02M408)

**Audition Information:** Professional Performing Arts School (PPAS) is a citywide school serving grades 6-12. Eligible students are invited to audition for the PPAS middle school theatrical arts program which includes acting, singing, and dance instruction from professionals in these fields along with an accelerated academic program.

Students will be invited to an audition based on academic standing and attendance. Invitations to audition will be sent to students and families prior to the holiday recess in December. Auditions will be held in the last week of January. We will work with students that have conflicts with other public school tests and auditions.

Auditions include acting, singing, and dancing. More details about what is required will be sent to students invited to audition in December. Meanwhile, students should begin to prepare a short monologue from a character close to their age, AND a short song (16 bars). The song can be a classical or gospel song, or a song from a musical.

**Ranking PPAS on the Middle School Application:** In order to be considered for a PPAS audition, you must rank PPAS as one of your choices on the middle school application you receive from your current elementary school. If you attend a private or independent elementary school, you can obtain a middle school application from a New York City enrollment center. All candidates must be residents of New York City at the time of application.



# District 13 Charter Schools

This is a list of charter schools located in District 13 currently authorized to offer a grade 6 by the 2015-2016 school year (subject to change). Please note that not all charter schools accept applications for new students in sixth grade. For the most up-to-date admissions information, contact schools directly.

---

**Achievement First Endeavor Charter School**

510 Waverly Avenue, Brooklyn, 11238  
DBN: 84K508  
Grades Served (2015-2016): K-12

Phone: 718-622-4786  
Fax: 718-622-5999  
Email: [tonysiddall@achievementfirst.org](mailto:tonysiddall@achievementfirst.org)  
Website: [www.achievementfirst.org](http://www.achievementfirst.org)

---

**Brooklyn East Collegiate Charter School**

80 Underhill Avenue, Brooklyn, 11238  
DBN: 84K780  
Grades Served (2015-2016): 5-10

Phone: 718-250-5760  
Fax: 212-885-1093  
Email: [aedwards@brooklyneastcollegiate.org](mailto:aedwards@brooklyneastcollegiate.org)  
Website: [www.brooklyneastcollegiate.org](http://www.brooklyneastcollegiate.org)

---

**Brooklyn LAB Charter School**

250 Jay Street, Brooklyn, 11201  
DBN: 84K803  
Grades Served (2015-2016): 6

Phone: 347-593-8369  
Fax: 914-612-9127  
Email: [admissions@brooklynlaboratoryschool.org](mailto:admissions@brooklynlaboratoryschool.org)  
Website: [www.brooklynlaboratoryschool.org](http://www.brooklynlaboratoryschool.org)

---

**Brooklyn Prospect Charter School Downtown**

Address: Contact school for information  
DBN: 84KTBD  
Grades Served (2015-2016): 6

Phone: Contact school for information  
Fax: Contact school for information  
Email: [info@brooklynprospect.org](mailto:info@brooklynprospect.org)  
Website: Contact school for information

---

**Community Partnership Charter School**

114 Kosciusko Street, Brooklyn, 11216  
DBN: 84K702  
Grades Served (2015-2016): K-8

Phone: 718-636-3904  
Fax: 718-636-3907  
Email: [info@cpcsschool.org](mailto:info@cpcsschool.org)  
Website: [www.cpcsschool.org](http://www.cpcsschool.org)

---

**Community Roots Charter School**

50 Navy Street, Brooklyn, 11201  
DBN: 84K536  
Grades Served (2015-2016): K-8

Phone: 718-522-2166  
Fax: 718-522-9827  
Email: [slee@communityroots.org](mailto:slee@communityroots.org)  
Website: [www.communityroots.org](http://www.communityroots.org)

---

**Leadership Prep Bedford Stuyvesant Charter School**

141 Macon Street, Brooklyn, 11216  
DBN: 84K517  
Grades Served (2015-2016): K-8

Phone: 718-636-0360  
Fax: 718-636-0747  
Email: [kbanks@leadershipprep.org](mailto:kbanks@leadershipprep.org)  
Website: [leadershipprepbedstuy.uncommonschoools.org](http://leadershipprepbedstuy.uncommonschoools.org)

---

**Unity Prep Charter School**

432 Monroe Street, Brooklyn, 11221  
DBN: 84K757  
Grades Served (2015-2016): 6-8

Phone: 718-455-5046  
Fax: 718-455-5049  
Email: [info@unityprep.org](mailto:info@unityprep.org)  
Website: [www.unityprep.org](http://www.unityprep.org)

---

## Notes

## Notes

## Notes